

Read & Follow Before Operating

**WARNING**

- Never place tactical light face down when light is on. Doing so could burn/ignite surfaces and cause serious property damage. Always turn tactical light off when not in use.
- To prevent serious damage to eyesight, never look into tactical light when light is on.
- Do not touch lens of tactical light when light is on or if it was recently on. The lens will be hot and could cause serious burns.
- Do not allow children to handle or operate this device.
- Do not use this product for other than its intended use.
- Do not charge or operate in close proximity of combustible or flammable materials.
- Do not attempt to charge or operate this device if cord, plug, battery, bulb or any part of the tactical light is damaged or corroded.
- Do not meddle with the bulb, probes or attempt to touch bulb.
- Avoid direct contact with heat.
- Do not use an outdoor AC outlet to recharge battery.
- Only use charging devices that are provided with the device or its authorized replacements.
- Do not disassemble or tamper with the battery.
- Do not submerge battery in water.
- Do not dispose of battery in fire as this may result in explosion.
- When disposing of battery, place electrical tape over metal contacts on battery to prevent short circuit, which could cause a fire.
- The battery should be recycled or disposed of properly. Contact your local county solid waste authority for proper recycling or disposal information.
- Do not use the device on metal surfaces as it may cause electric voltage to travel on the surface.
- Keep away from extreme temperatures and weather conditions

It is recommended to keep this device equipped at all times.

It is the buyer's responsibility to check local and state laws for the use of the device.



YOUR BEST FRIEND IN SECURITY

# TITAN

Guard Dog Security is a registered trademark of Skyline USA, Incorporated  
4180 St. Johns Parkway, Sanford, FL 32771 USA



YOUR BEST  
FRIEND IN SECURITY

# TITAN

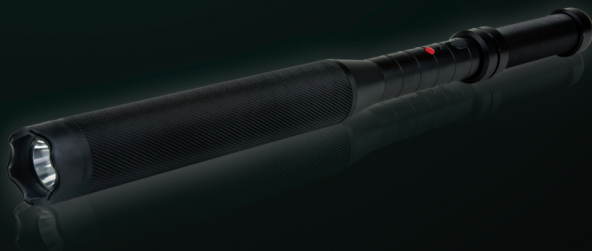
U.S.  
PATENT  
PENDING

BATON + TACTICAL FLASHLIGHT + STUN GUN

## 260 LUMEN RECHARGEABLE TACTICAL BATON

## CONGRATULATIONS

ON YOUR NEW PURCHASE



ALUMINUM ALLOY



300 LUMEN



6500K STUN GUN



### Numerical Representation:

- |                           |                           |
|---------------------------|---------------------------|
| 1 - Function Slider       | 4 - Charging indicator    |
| Top: Stun Gun mode        | 5 - Car Charger           |
| Middle: Light functions   | 6 - Wall Charger (110v)   |
| Bottom: All functions off | 7 - Safety Switch         |
| 2 - Stun Gun Activator    | 8 - Concealed Stun Probes |
| 3 - Charging Cord Input   | 9 - Tactical Flashlight   |

### Numerical Representation:

- |                           |                           |
|---------------------------|---------------------------|
| 1 - Function Slider       | 4 - Charging indicator    |
| Top: Stun Gun mode        | 5 - Car Charger           |
| Middle: Light functions   | 6 - Wall Charger (110v)   |
| Bottom: All functions off | 7 - Safety Switch         |
| 2 - Stun Gun Activator    | 8 - Concealed Stun Probes |
| 3 - Charging Cord Input   | 9 - Tactical Flashlight   |

Bulb Cree LED	Output range: 260 lumens at highest 90 lumens at lowest
Weight w/ battery	74 ounces
Operation	Ultra bright High Low Strobe S.O.S

### The device must be charged for 8-10 hours prior to initial use

#### Charging your device:

Ensure the flashlight is off. Unscrew the Tail Cap and remove the battery from the flashlight. Screw the Tail Cap back onto the flashlight. Insert the Rechargeable Battery into the Charging Cradle by putting the positive (+) end towards the negative (-) end of the Charging Cradle. A red light will appear on the Charging Cradle which will indicate successful charging. Charging time varies based on battery usage, but is typically around 3-8 hours. Do not charge battery for more than 12 hours consecutively.

After charging, carefully remove the Rechargeable Battery from the Charging Cradle, unscrew the Tail Cap and insert the battery with the positive (+) end going in first. Screw the Tail Cap back on tightly.

**Note:** Tail Cap must be screwed onto the tactical flashlight firmly. A loosely screwed tail cap can alter the light quality and output.

**WARNING:** Do not allow water or moisture to enter the inside of the tactical flashlight, the Charging Cradle or the Rechargeable Battery prior to, during, or after charging.

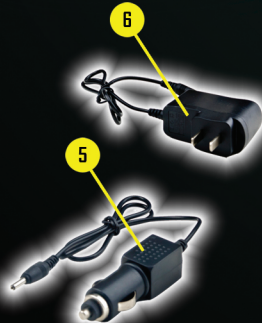
**IMPORTANT:** Do not allow battery to completely discharge. A dim light indicates a low battery. Charging when battery life has been completely drained can reduce the product life expectancy.

**IMPORTANT:** If battery is not used for more than 90 days, remove battery from the tactical flashlight and keep in a dry place.

#### To operate the flashlight:

Ensure battery is completely charged using the above instructions.

**QUICK SET DIAL** - The Marina is equipped with a Quick Set Dial. Make sure the flashlight is set to the OFF position when the device being charged or not intended for usage. To change the light setting, twist the Quick Set Dial to the light setting of your preference.



# TITAN



### GUARD DOG Lifetime Warranty

This Guard Dog product has a lifetime warranty from the date of original purchase. Manufacturer warrants the product to be free from defective material or factory workmanship and agrees to repair or replace such products within normal use. Removal of battery pack, placement in moist/wet areas/surfaces, placement in extreme heat or cold, unintended use, mishandling, normal wear and tear, product life cycle use and/or self-inflicted damage to the device will void the warranty. Owner must provide receipt of purchase/ownership from an authorized Guard Dog Security retailer.