



Congratulations on your CASTLECREEK® purchase.

We're proud to help you furnish and enhance the place you call home.
Whether indoors or outside, CASTLECREEK® is the perfect choice for
comfortable living at an exceptional value.

Item #581818 CASTLECREEK® 8FT Window and Door Awning

Fits openings 73" to 96"



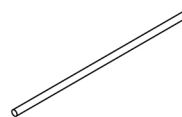
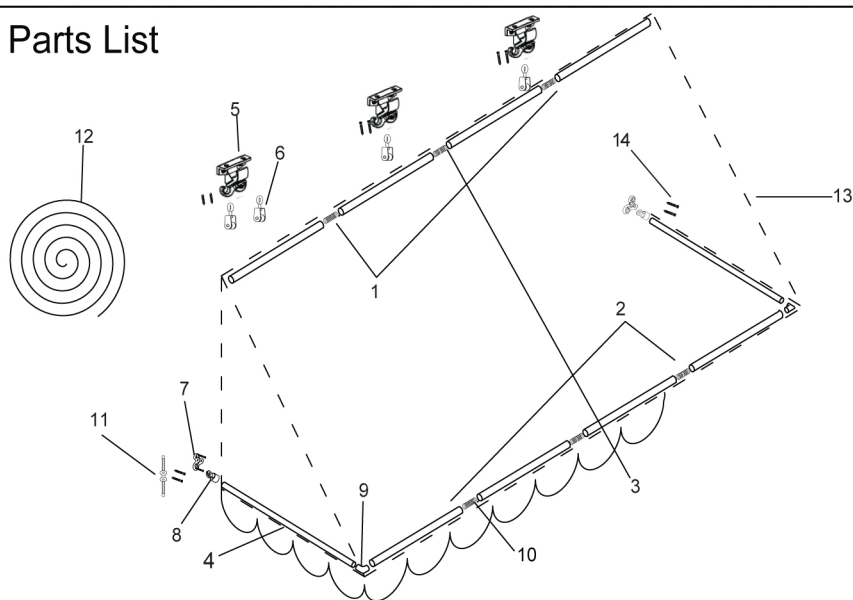
For assistance with your product, please contact the Sportsman's Guide customer service at 1-800-888-3006 Mon.-Fri. 7:00am to 9:00pm, Sat.-Sun. 8:00am to 8:00pm CST or go to sportsmansguide.com/customerservice/contactus



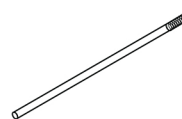
WARNINGS:

- Confirm all parts are present before assembly. If any part is missing, cracked or damaged, please contact Sportsman's Guide customer service before assembly.
- At least two people are recommended for safe assembly and installation of this product
- ⚠ **WARNING:** This package contains small parts and is a choking hazard, keep away from children, persons that have a tendency to place inedible objects in their mouths and pets.
- Due to the numerous materials to hang this product from, the enclosed hardware is not intended to be used for all situations and in all constructions types. We recommend consulting with a qualified professional for your particular installation and additional hardware needs to insure not only proper support for the weight of the product, but also avoid utility and property damage.
- NEVER attempt to modify this product or subject it to an installation or use for which it was not designed. Doing so may result in damage and/or serious injury.
- The warnings, cautions, and instructions in this manual cannot cover all possible conditions or situations that could occur. Exercise common sense and caution when using this product. Always be aware of the environment and ensure that the product is used in a safe and responsible manner.

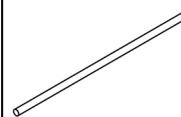
Parts List



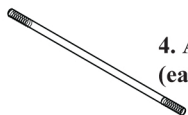
1. Head Rod X 2PCS
(one end internal threads)



2. Front bar x 2pcs
(one end external threads
and one end internal threads)



3.connect tube x 4 pcs
(each end internal threads)



4. Arm x 2 pcs
(each end external threads)



5. Head rod clamp x 4 pcs



6.Pulley x 3 pcs



7.Hinge x 2 pcs



8.Eye end x 2pcs



9.Elbow x 2 pcs



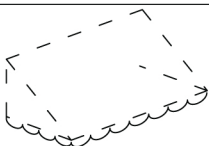
10.Internal connector x 6 pcs



11.Cleat x 1 pcs



12.Thread x 1 pcs

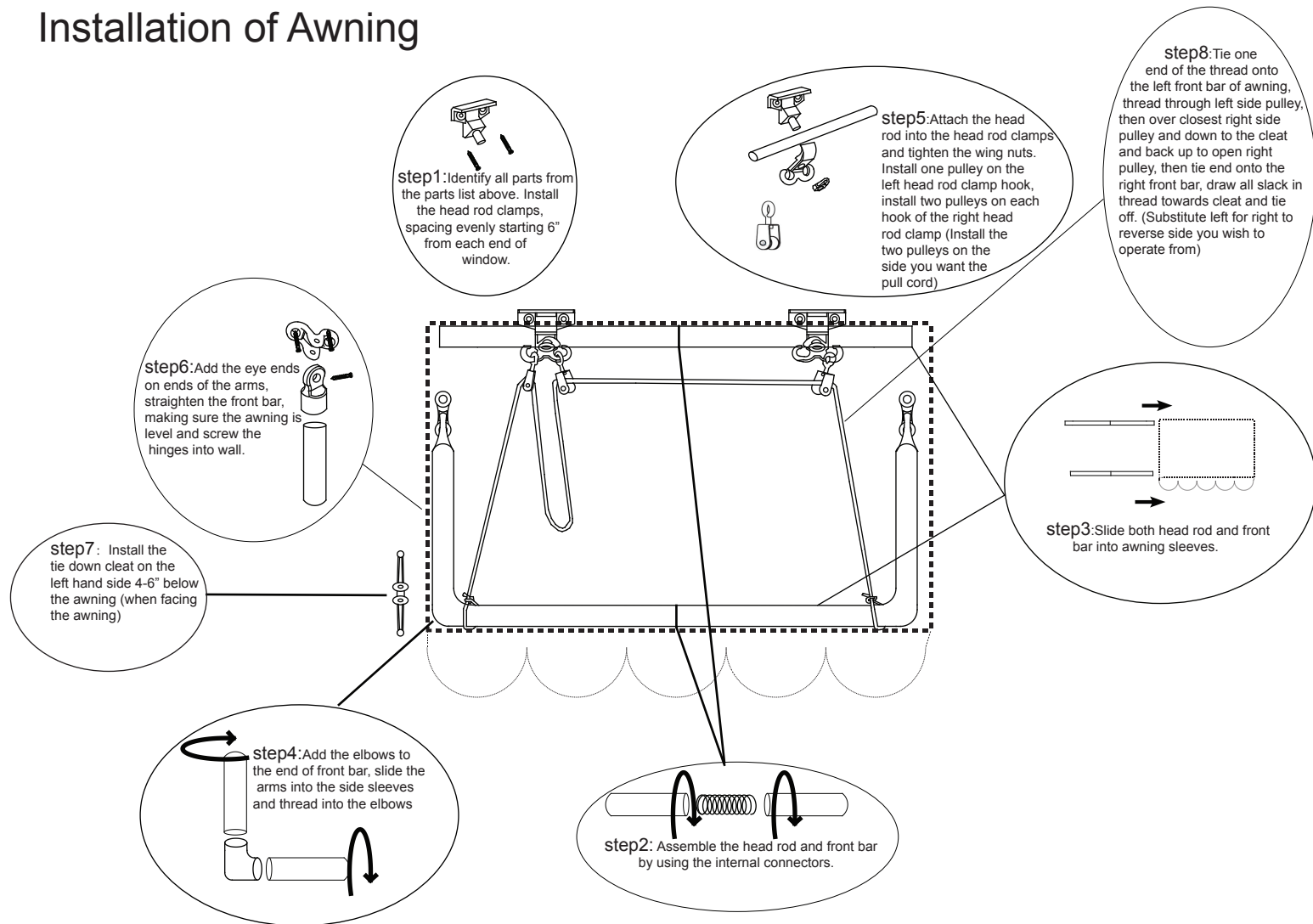


13.Fabric x 1 pcs

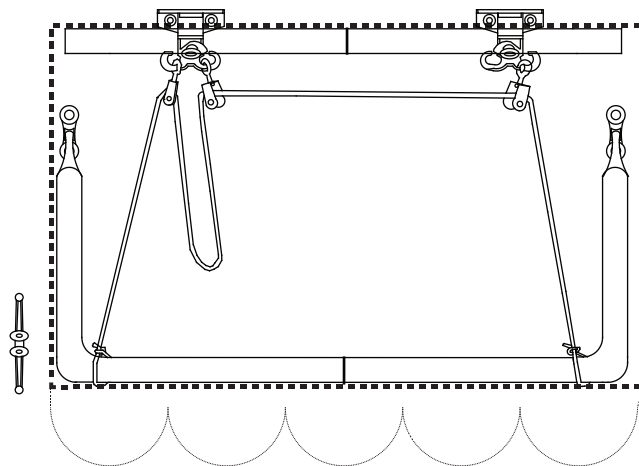


14.Screw x 14 pcs

Installation of Awning



Finished plan



CARE and USE

- Avoid using chemicals to clean your awning. They may damage UV treatment.
- Use mild soap and water to clean your awning.