

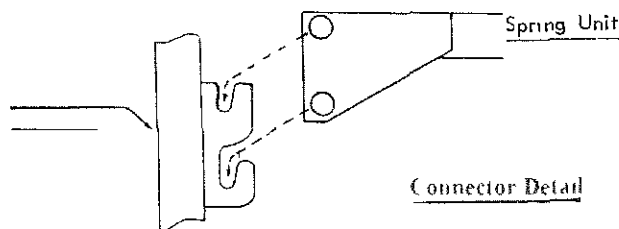


Assembly Instructions for the Heavy Duty Stackable Bed Type I, Style A



BED, Type I, Heavy-duty, stackable, Style A
Contemporary Oak, brown finished steel frame with headboard and footboard and wood decorative side rails. Two beds are required to make up a bunk bed unit. Recommended mattress size 965 mm x 2030mm (38" x 80")
940 mm H x 1065 mm W x 2160 mm L
37" H 42" W 85" L

7105-01-346-5996 Finish 1 - English Oak
7105-01-462-1062 Finish 2 - Natural Oak
7105-01-346-5998 Finish 3 - Light Oak
7105-01-346-9128 Finish 4 - Dark Oak



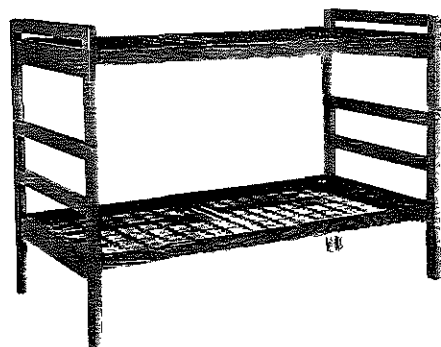
Partlist: 1 - Headboard
1 - Footboard
1 - Spring Unit w/Facia Rails
1 - Bag w/ (2) 3/4" x 2" Dowels
and 4 Nylon Glides
1- Instruction Sheet

To set up the heavy duty stackable bed hook one end of the spring unit into the metal brackets of the headboard and the other end into the metal brackets of the footboard as shown

To bunk the heavy duty stackable beds, remove the mushroom buttons on top of the headboards by twisting the buttons with a set of pliers out of the dowel holes. Insert the (4) 3/4" dia x 2" long wood dowels into the two headboards. Set up the bottom unit with two headboards and one spring unit and the upper unit with the two footboards and one spring unit. Stack the assembled upper unit on top of the headboard lower unit by lining up the posts and slide the posts onto the dowels.

The four nail glides provided with each bed can be installed on the single bed or on the bunk bed set-up.

For single unit set ups or on the bottom bunk bed only, the spring unit can be raised 4" (100mm) by installing the bed hooks in the upper two holes. This raises the sleeping surface and allows 2 drawer high storage units to be placed under the bed.



2 Heavy duty beds stacked into one Bunk Bed