




Congratulations on your Guide Gear® purchase.  
Enjoy your new Guide Gear® item with confidence, knowing it has been designed  
and built to deliver dependable quality and performance  
at an exceptional value.

**Item#702141 Guide Gear® Disc Plow**



For assistance with your product, please contact the Sportsman's Guide customer service at  
1-800-888-3006 Mon.-Fri. 7:00am to 9:00pm, Sat.-Sun. 8:00am to 8:00pm CST or go to  
[sportsmansguide.com/customerservice/contactus](https://sportsmansguide.com/customerservice/contactus)





 **WARNING: ALWAYS** read and understand all warnings, cautions, installation and use instructions prior to installing or using this product. Failure to follow all warnings, cautions and instructions may result in serious injury or damage to personal property.  
**ALWAYS** wear appropriate safety gear such as ANSI-approved safety goggles and proper work gloves/gear when using your ATV/UTV.  
**NEVER** allow other persons to install or use this product until they have read this manual and have developed a thorough understanding of how the product works.


**NEVER** leave children unattended near the product. Not intended for use by children.

**NEVER** exceed the manufacturer's weight rating of your ATV/UTV hitch. If you are unsure, always refer to the original ATV/UTV owner's manual.

**ALWAYS** maintain proper balance and weight distribution of your ATV/UTV, you may need to add weight to the opposite end of the ATV to counter weight the load.

 **CAUTION:** Operating an ATV/UTV with accessories or additional implements secured to the ATV may effect the handling of the ATV/UTV, including breaking, steering, stopping and turning.

 **CAUTION:** Implements may be heavy, use caution when installing or removing any implements. Assistance may be required.

 **WARNING: NEVER** exceed 5 MPH when operating or traveling with implements attached to your ATV/UTV. Excessive speeds can result in loss of control and can cause serious personal injuries or death.

**NEVER** operate your ATV/UTV on steep inclines while using this product, tipping or roll overs can occur.

**NEVER** carry passengers on your ATV/UTV unless your ATV/UTV is designed to carry more than one person .

**ALWAYS** keep hands and feet away from all implements while operating the ATV/UTV.

**NEVER** get under or between any implement while installing the product or operating the ATV/UTV.

**ALWAYS** be aware of pinch points to prevent injury.

**NEVER** install or operate this product while you are tired or under the influence of drugs or alcohol.

The warnings, cautions, and instructions in this manual cannot cover all possible conditions or situations that could occur. Exercise common sense and caution when using this product. Always be aware of the environment and ensure that the product is used in a safe and responsible manner.

**ALWAYS** thoroughly inspect your product for loose parts and/or signs of damage prior to each use, installation or removal. Using correct wrenches, inspect all nut & bolt assembly locations and snug up any that may be loose. Be careful not to crush tubing when tightening!

**NEVER** use the product until any loose parts have been properly secured or damaged parts have been properly replaced.

### **MAINTENANCE BEFORE EACH USE:**

**ALWAYS** inspect all nut and bolt assemblies, hardware, and components for damaged, missing, or loose parts.

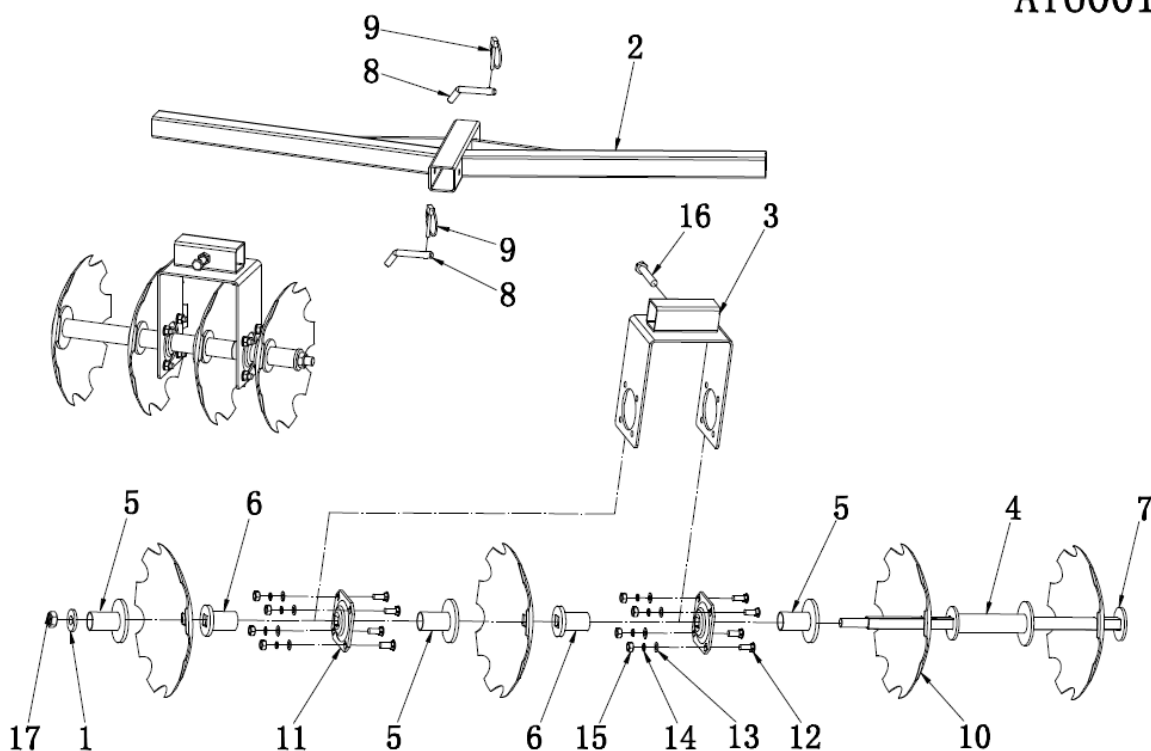
**ALWAYS** inspect entire product for any rust, corrosion, cracks, freezing, excessive heat or rotting damage that may affect the safety of your product. Discard any questionable product.

**ALWAYS** inspect entire product for any structural damage - pay close attention to all weld locations.

**NEVER** use the product until any loose parts have been properly secured or damaged parts have been properly replaced.

ITEM #	PART #	DESCRIPTION	QTY
1	AU004-4001	WASHER	2
2	AU004-4100	MAIN CROSS BAR	1
3	AU004-4200	DISC BRACKET	2
4	AU004-4310	LARGE SPACER	2
5	AU004-4320	MEDIUM SPACER	6
6	AU004-4330	SMALL SPACER	4
7	AU004-4400	DISC SHAFT	2
8	AU001-1004	HITCH PIN	2
9	AL-5605	QUICK PIN	2
10	AU004-4002	DISC BLADE	8
11	AU004-4003	SHAFT BEARING	4
12	12120355W	M12 X35mm BOLT	16
13	30120002W	M12 FLAT WASHER	16
14	32120002W	M12 LOCK WASHER	16
15	40120002W	M12 NUT	16
16	10160355W	M16 x 35mm BOLT	2
17	41200002W	M20 NUT	2

## AT6001CR





The ATV/UTV disc plow will fit onto any 2" receiver tube .

