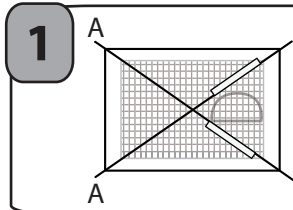
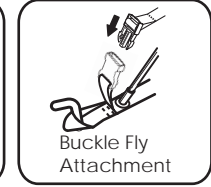
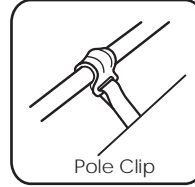


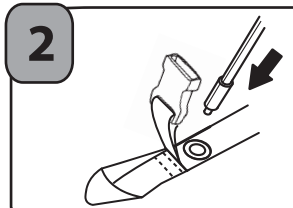


# Daybreak 2 & 3

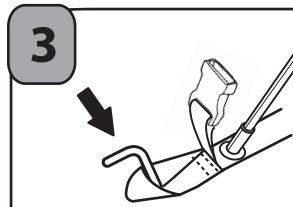
Please familiarize yourself with this tent and its set up procedure before first use. SJK recommends that all users practice "test pitching" this tent several times. Package Includes: Carry bag, tent body, tent fly, three poles, guy line cords, and tent stakes. Model specific footprints available seperatly. For additional information please visit [www.SJKgear.com](http://www.SJKgear.com)



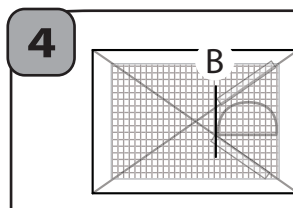
**1** On an even piece of ground lay tent out flat floor side down. Extend the poles by pulling out each section and placing ends into the metal ferrule connectors. You will have four poles. The two longer poles are the main tent poles and the shorter pole is the roof ridge pole. Slide the two main tent poles (A) through the sleeves that are opposite each other on the roof of the tent. Position poles so that they form an "X" across the tent. Be sure to assemble all poles fully and ensure all segments are fully seated at each joint.



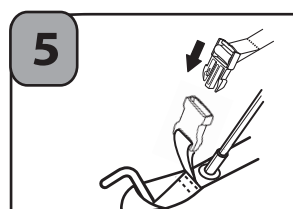
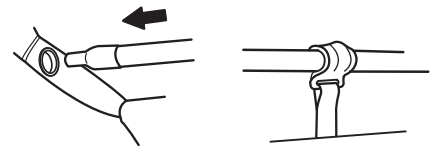
**2** Place the ends of the poles into the grommets located at each front corner of the tent. To raise the tent, one person should go to each of the back corners of the tent and flex the poles into an upward position, forming two arches and place the tips at the ends of the poles into the grommets at the base of the tent. Attach the pole clips to the frame poles.



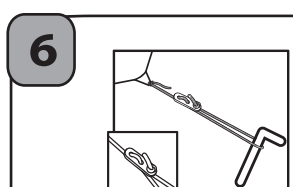
**3** Stake down tent by inserting metal tent stakes through the stake loops at each corner of the tent, hammering stakes into ground at a 45° angle, making sure the tent floor is pulled out even and snug.



**4** Lay the ridge pole (B) over tent above the door and attach the grommets at each end of the pole. Attach the pole clip to hold the ridge pole in place. Be sure to assemble the ridge pole fully and ensure all segments are fully seated at each joint.



**5** Unfold the fly and stretch out all corners. Place the fly over the tent, making certain the two zippers are located over the front door of the tent. Attach the buckles on the fly corners to the base of the tent. Fasten the hook and loop inner connectors, sewn to the underside of the fly around the tent poles at all locations. Stake down the front of the vestibule by inserting the stakes though the stake loops and hammer the stakes into the ground at a 45° angle. Stake out all other points on the fly.



**6** Guy ropes have been provided for the four corners of the fly. Attach the guy lines to the wings on the fly. Next, make a loop at the opposite end of the guy rope by using the slider (as shown) and place the loop over a tent stake. Adjust slider to make guy rope tight and stake to the ground. If you have any questions please contact customer service. Enjoy & thank you for your business!

# SJK / Slumberjack Tent User Manual

**DANGER** 

**DO NOT USE FUEL-BURNING DEVICES INSIDE OR NEAR THIS TENT.**

Stoves, lanterns, candles, grills, heaters and other fuel burning devices produce carbon monoxide and will consume the available oxygen in this tent.

**FAILURE TO FOLLOW THESE WARNINGS WILL CAUSE ASPHYXIATION, CARBON MONOXIDE POISONING, AND DEATH OR SERIOUS AND PERMANENT INJURIES**

**WARNING** 

**KEEP ALL FLAME AND HEAT SOURCES AWAY FROM THIS TENT FABRIC.**

This tent is made with flame resistant fabric which meets CPAI-84 specifications. IT IS NOT FIREPROOF. The fabric will burn if left in continuous contact with any flame source.

The application of any foreign substance to the tent fabric may render the flame-resistant properties ineffective. This tent must be properly ventilated in all weather conditions. For example, snow could obstruct airflow and cause asphyxiation unless cleared frequently.

NEVER leave children unattended inside a tent. Anchor your tent securely to provide additional security from changing climatic conditions. Snow pegs, skis and/or heavy rocks may be necessary to supplement tent stakes and guy cords.

**FAILURE TO FOLLOW THESE WARNINGS COULD CAUSE ASPHYXIATION, CARBON MONOXIDE POISONING, AND DEATH OR SERIOUS AND PERMANENT INJURIES.**

## COPING WITH THE UNEXPECTED

Even though SJK / Slumberjack uses only the best quality materials, accidents and normal wear and tear do take their toll on your tent.

### Poles

Before pitching your tent, be sure all sections of your poles are fully engaged at their joints. Gaps at section joints will expose the pole's inserts to forces for which they were not intended. This can cause them to bend or break. Tent pole inserts are sufficiently strong for their function, but only when they are fully joined and connected with their mating tube sections.

While assembling or folding your poles, be sure not to allow pole sections to snap against one another as the impact can cause stress fractures and denting of the tube ends. Try to avoid stepping on or striking your poles on rocks during setup. Pole damage most frequently occurs during pitching, or when horseplay occurs around the tent. Be sure not to bend your poles into tighter curves than they naturally assume in the tent – take extra caution in high wind situations. Excessive bending or distortion of the poles can occur in a free-standing tent if it is picked up by only one of its poles while moving the tent. Move a free-standing tent by grasping it at the pole intersections. A slightly bent pole does not lose its strength and does not require replacement unless it distorts the shape of the tent.

Proper care of poles includes keeping them clean and free of dirt and salt.

Always rinse poles with fresh water if exposed to salt water or after coastal camping. Occasional lubrication of the section joints with silicone spray will help the joints slide together freely and will help keep ice from forming, and causing problems in snow.

### Shockcord

Your SJK / Slumberjack poles are assembled with extreme weather shockcord – the only elastic cord created especially to withstand the rigors of serious backpacking and mountaineering use. Keeping your poles in a fully (or partially) extended position during long-term storage will relieve the tension on the elastic cord and help to ensure maximum performance and reliability. When folding your poles, be sure to fold from the center out so as not to place uneven tension on the elastic cord.

Occasionally the shockcord in your poles may break, pull out of the pole, or just go limp. This is not a disaster; the pole is still perfectly functional. The tension on the pole when it is set in place on the tent will keep it together. Finish your trip and return the pole to the SJK / Slumberjack Warranty Department, at your leisure, for repair.

### Zippers

Always be gentle when operating zippers. Avoid standing on them and try to limit exposing them to dirt and grit. Taking these precautions combined with frequent cleaning will protect them against premature failure.

### Tears and Damage

Despite your best efforts, sometimes damage does occur to your tent. Waterproof self-adhesive repair tape is sold at many outdoor stores and several pieces can be tucked into the tent bag without adding any appreciable weight. Urethane based seam sealing products can be used to plug small holes. Low residue duct tape works as well for minor field repair. It's a good idea to carry one or a combination of these things with your tent in the event the tent is damaged while in use. Duct tape should be removed at end of trip.

### Condensation

Condensation is the build-up of moisture on the inside of your rainfly and tent walls due to a temperature difference between the inside and outside of your tent. Condensation occurs mostly when the conditions are cold, rainy, or humid, although it can occur at any time. The best way to minimize condensation is to increase the ventilation within your tent and between the tent body and fly. Completely guying out the rainfly often helps, as does leaving the vestibule door open as much as possible.

## HOW TO CARE FOR YOUR TENT

### Before You Go Camping: Weatherproofing Your Tent

Additional seam sealing can be added to the perimeter to further insure waterproofness. The rainfly and center floor seam (if applicable) of your tent have been taped at the factory. While seam tape significantly increases the weatherproofness of your tent, additional seam sealing will improve the performance of your tent in rainy conditions. For additional weatherproofness, seal all places where attachments are sewn to the fly, including webbing, Velcro, snaps, guy-outs, and zipper tracks. The best way to seal your tent is to use a urethane-based seam sealer and run a thin bead around the base of the attachment, where it is sewn to the tent.

### Caring for Your Tent on the Trail

It is important to select a site which has been cleared of any sharp objects such as rocks or sticks. Many people prefer to use ground sheets under the tent for additional protection. If you choose to do so, make sure the floor of the tent completely covers the ground sheet, or else the sheet will collect rain. Tent Footprints are now available for all current SJK / Slumberjack tents.

### Staking and Guying Out Your Tent

Most SJK / Slumberjack tents are free-standing, not requiring the use of stakes in order to pitch the tent. This is a matter of convenience, allowing quick set-up and easy moving and cleaning of the tent. All tents, free-standing or not, must be staked out properly in order to achieve full structural integrity and prevent wind damage. No lightweight, back-packing style tent, whether rated at 3-season or 4-season, is capable of withstanding strong, wind gusts, without damage unless anchored and guyed properly. Guying out your tent can increase rain protection and ventilation and greatly enhance wind resistance.

### Fire

Your tent is constructed of flame-retardant materials, however this material will melt if exposed to sufficient heat or open flame. Use prudence in positioning your tent near campfires, stoves, barbecues, etc.

### Caution:

SJK / Slumberjack is absolutely against cooking inside a tent. Asphyxiation, severe or even fatal burns are possible if a stove is used in a tent, or vestibule, without adequate ventilation. Additionally, a hot stove can melt through your tent floor if the stove is not rigorously insulated; and pots of hot liquid, if left uncovered, may create a condensation ridden tent.

### Ultraviolet Light

UV light is one of the most damaging of all the elements. When exposed to prolonged and extensive sunlight most fabrics will fade, lose strength, and eventually break down. Try to minimize exposing your tent to the sun. Store it during the day or pitch it in shady areas.

### Animal Hazards

Animal damage to tents is all too common, but is usually easily avoidable: Never store food in your tent!

### What to Do When the Trip is Over

It is important to dry your tent completely before returning it to its stuff sack. If stored wet, mildew will occur. Mildew damage is not covered under warranty. In needed gently hand wash your tent with a mild soap and a sponge. Do not use harsh detergents, chemicals, or abrasive materials. Dirt particles left in the weave of the material speed up the deterioration of the fabric. Clean tents last longer. Never machine-wash your tent!! Over extended periods, store your tent loosely, out of the bag in a cool, dry environment.

## SJK / Slumberjack Warranty and Repair Service

We maintain a full repair facility to assist you with any problems you may have with any SJK / Slumberjack product. We offer a lifetime warranty against defects in materials and workmanship, and for a nominal charge we will repair damage due to accidents or normal wear and tear. This warranty does not cover damages caused by improper care, accidents, or the natural breakdown of materials over extended use and time. All items returned for repair must be clean. SJK / Slumberjack does not wash tents! Dirty tents will be returned to sender for cleaning. Please contact customer service with comments or questions at [hunt@slumberjack.com](mailto:hunt@slumberjack.com) by calling 800-233-6283 during regular business hours.