



Congratulations on your Guide Gear® purchase.

Enjoy your Guide Gear® item with confidence, knowing it has been designed and built to deliver dependable quality and performance at an exceptional value.

Guide Gear® BASE CAMP TENT - 718855-000-000



For assistance with your product, please contact Sportsman's Guide customer service at 1-800-888-3006 Mon.-Fri. 7:00am to 7:00pm, Sat.-Sun. 9:00am to 6:00pm CST or go to sportsmansguide.com/customerservice/contactus



www.SportsmansGuide.com

FOR YOUR SAFETY, BE SURE TO READ ALL INSTRUCTIONS AND WARNINGS CAREFULLY.

UNDERSTANDING AND FOLLOWING ALL INCLUDED INFORMATION WILL HELP REDUCE THE RISK OF DAMAGE OR INJURY AND HELP ENSURE AN ENJOYABLE TENTING EXPERIENCE.

KEEP THESE INSTRUCTIONS FOR FUTURE REFERENCE.

WARNINGS

THIS TENT IS NOT FIREPROOF. KEEP AWAY FROM ALL SOURCES OF OPEN FLAME OR HIGH HEAT. THE FLAME RESISTANT FABRIC MEETS THE REQUIREMENTS OF CPAI-84 BUT IT WILL BURN IF LEFT IN CONTACT WITH OPEN FLAME OR EXTREME HEAT. THE APPLICATION OF ANY FOREIGN SUBSTANCE TO THE FABRIC MAY RENDER THE FLAME RESISTANT PROPERTIES INEFFECTIVE.

NEVER allow children to handle any part of the tent without close adult supervision. Tent components such as stakes are dangerous.

NEVER allow children in or around the tent without close adult supervision.

NEVER allow the material to cover your face. It can cause suffocation and death.

NEVER use excessive force on the poles or any component of the tent or damage may result.

ALWAYS check for surrounding hazards when picking the tent site. Beware of possible falling rocks and tree limbs, lightning strikes, flash floods, strong winds and other natural hazards which may cause injury or damage.

ALWAYS anchor your tent properly to reduce the risk of damage to the tent or injury to occupants.

NEVER use candles or fuel-burning devices such as lanterns, heaters, cooking stoves, etc. in the tent. Their use poses a fire hazard and can result in asphyxiation and carbon monoxide poisoning, both of which can lead to serious, permanent injury and death.

NEVER spray the tent with insecticides or insect repellents. They can cause damage to the tent materials.

Avoid leaving the tent outdoors for a prolonged period of time. Prolonged exposure to sunlight may cause the fabric to fade.

To remove tent stakes, use a hammer or stake puller. Do not remove stakes by pulling on the tent fabric. This will cause damage to the tent.

HELPFUL INFORMATION

Familiarize yourself with all the tent components and fully assemble your tent at least once before the first adventure.

Set up the tent annually and ensure all components are accounted for and in good condition. Replace any damaged components before actual use.

Pitch the tent in an area free of sharp objects like rocks and sticks that could damage or puncture the tent floor. Using a ground cloth under the tent is recommended. Make sure the ground cloth is smaller than the tent floor. This will help prevent water from pooling between the ground cloth and tent floor.

Choose a camp site that will drain well in the event that it rains.

Make sure all the fabric ties, clips and or hooks are secured to the poles for the proper support of accessories.

Insert stakes at a 45° angle with the tops facing away from the center of the tent.

When possible, open windows and doors for increased ventilation to

control condensation that may form on the inner tent surface.

Know the rules and regulations of the area where you intend to camp. Research the area for hazards. Prepare for any possible weather conditions. Be aware of emergency protocol.

Be considerate of wildlife and fellow campers. Remember to clean up your site and dispose of waste properly.

Before take-down, sweep debris from the interior of the tent using a soft bristled broom.

Brush off dirt and debris with a soft-bristled brush or cloth. Do not scrub the tent fabric, as you may damage the water-repellent properties. Gently clean soiled areas of the tent using a soft cloth, warm water and mild, non-detergent soap if needed. Rinse thoroughly.

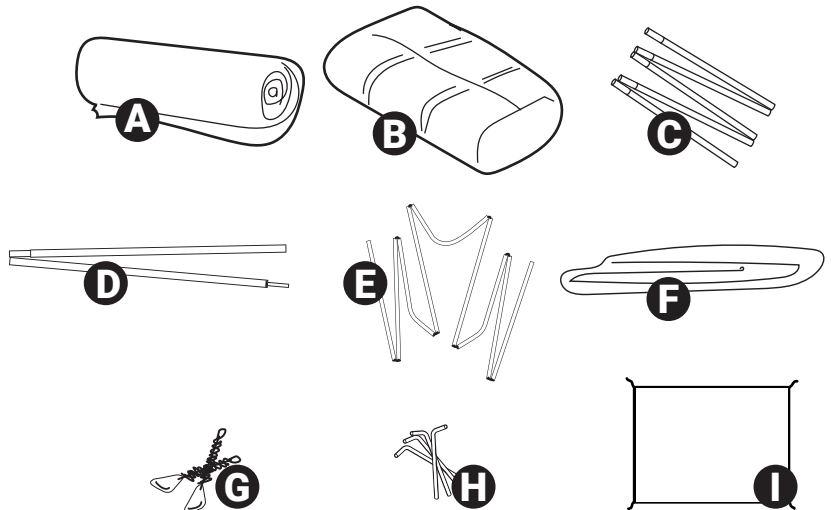
ALWAYS make sure your tent is completely dry before storing.

Store in a cool, dry location away from direct sunlight.

(BC-200)

Package Contents

- A - Part # BC-200B: (1) Tent Body
- B - Part # BC-200C: (1) Carrying Case
- C - Part # 20051: (1) Center Pole (120")
- D - Part # 20052: (16) Side Poles (49")
- E - Part # 20053: (1) Porch Pole
- F - Part # 20054: (1) Removable Porch Floor
- G - Part # 20055: (23) Guy-lines & Tensioners
- H - Part # 20056: (36) Ground Stakes (11")
- I - Part # 20057: (1) Heat Shield



KEY FEATURES AND SPECIFICATIONS

- 300 Denier polyester/oxford tent body and floor with 3,000mm water-resistant coating
- Tent 10' center height and 4' side wall height
- Tent diameter: 14'
- Zippered porch door is 6'h. x 4'w. at base
- Bathtub-style floor extends up the sidewalls for added water resistance
- Stove jack in roof accommodates stove pipes up to 5.5"
- Removable 46" x 35" heat shield made of 23% silicone / 77% fiberglass
- (5) windows are 35"w. x 10"h. each
- 2 side door/awning panels are 4'w. x 3'h. each
- Lantern hook on center pole
- Includes reflective guy lines with steel tensioners and stakes
- Weight: 58 lbs.
- Carry bag dimensions: 31" x 14" x 14"

HEAT SHIELD WARNINGS

THE HEAT SHIELD IS NOT FIRE PROOF. Exposure to temperatures higher than 500° Fahrenheit (260° Celcius) will cause the material to melt or burn, which may cause serious permanent injury and death.

Use caution when touching or handling after use. Allow sufficient time for the material to cool.

The heat shield is not designed to extinguish fires.

WOOD STOVE USE AND SAFETY INFORMATION

Your Guide Gear Base Camp Tent is equipped with a stove jack should you opt to use it in conjunction with a wood burning stove.

Extreme caution should be used when operating a wood burning stove! Carefully read and follow these important safety guidelines.

PRIOR TO SETTING UP YOUR TENT, pay attention to the expected weather conditions and prevailing wind direction. Position your tent so that the wind will carry any sparks escaping the chimney away from the tent roof. Be sure the area above the stove jack is completely free of any tree branches that could interfere with the stovepipe chimney or be ignited by hot chimney exhaust/sparks.

Completely secure the stove jack flap so it does not unroll and come in contact with the hot stovepipe, which could cause your tent to catch fire.

ALWAYS ensure all stove components are in good working order prior to set up.

ALWAYS ensure that the stove box is level and secure and all stovepipe sections have been securely fitted prior to use.

NEVER exceed the 5.5" maximum stovepipe diameter limit of the stove jack. A slight gap must remain between the stovepipe and the stove jack opening to allow the tent roof to move unimpeded.

ALWAYS use a spark arrestor on the end of your stovepipe chimney. All spark arrestors become clogged with ash and soot. Check your spark arrestor daily and clean as required. A clogged spark arrestor can lead to a chimney fire and/or a back-up of dangerous combustion fumes into your tent.

ALWAYS ensure that the spark arrestor on the stovepipe chimney clears the peak of the tent roof. Doing so will help reduce the risk of stray sparks coming into contact with and damaging or igniting the tent roof.

ALWAYS regularly check that the stovepipe chimney is stable and secure. Wind can wobble the chimney and loosen stovepipe connections leading to unsafe conditions. Tall chimneys may need to be secured with heat resistant guy-lines for added safety and stability.

ALWAYS use a non-flammable stove mat, or barrier underneath your stove. The stove mat should extend a minimum of 18" beyond the front of the stove and 6" beyond the ends of the stove legs and rear. This will help reduce the risk of a tent fire or floor damage.

ALWAYS install the included tent wall heat shield when using a wood burning stove in your tent.

After your initial stove and chimney set up is complete, **ALWAYS** test it with a small fire to ensure everything is functioning properly.

ALWAYS make sure tent walls and any flammables are kept at least two feet away from your stove.

ALWAYS ensure adequate ventilation via windows, vents, and/or doors when the stove is in use. A lit stove consumes oxygen from inside your tent.

NEVER use flammable liquids to start a stove fire. Burn **ONLY** firewood. Seasoned hardwood is recommended to lessen the buildup of creosote.

NEVER allow creosote to build up in your stove or stovepipe chimney. Excessive creosote can clog stovepipes and result in extremely dangerous chimney fires. Learn how to minimize and remove creosote before using a wood burning stove.

NEVER allow the stove or stovepipes to become orange or red hot. Minimize fuel and use dampers to control burn. Do not use wood types, or oversized fires that cause hot embers to emit from the stovepipe. Damage caused by embers, or excessive stove or stovepipe heat is not covered by the warranty.

ALWAYS use a battery-operated, combination carbon monoxide & smoke detector in your tent when utilizing a wood burning stove.

ALWAYS keep a working fire extinguisher accessible inside the tent when a stove is in use.

ALWAYS have a competent adult tend to a stove that is hot and/or in use.

NEVER leave children or pets unattended in a tent with a hot stove.

NEVER use a stove during strong wind conditions. Hot embers can emit out of the stove chimney and potentially cause a forest fire. Only use in safe conditions. Know and obey local regulations and fire restrictions.

This manual cannot cover all possible circumstances. Sound judgement must be exercised in determining how, when and where to safely use a wood burning stove.

UNROLL THE TENT AND ASSEMBLE THE POLES

A Once you have determined the best, safest positioning, lay out the tent body accordingly.

Loosely stake out the floor of the main tent body in a star shaped pattern. Position an assembled side pole, guy-line and additional stake on the ground at each floor stake-down point to help save time later.

Assemble the center pole.



ERECT THE TENT

B Insert the center pole into the center of the tent roof. Slowly raise the tent, allowing air to enter. Do not use force.

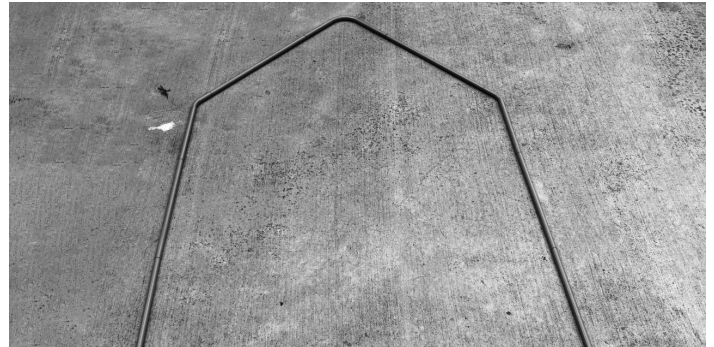


C Begin erecting the perimeter of the tent by inserting the side poles. Put the top of the pole through the awning grommet and insert the metal pin on the stake loop through the bottom of the pole to hold it in place. Attach the guy-line to the awning loop and stake it out loosely so that it can be adjusted later if necessary.



ERECT THE PORCH

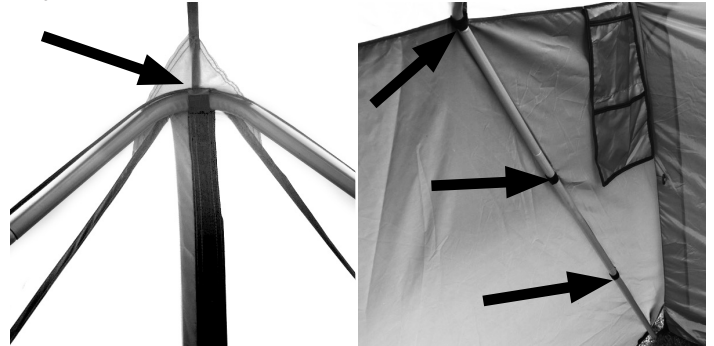
D Assemble the porch frame pole.



E Locate the peak of the porch entrance and attach the longest guy-line through the loop. Do not stake it down yet.



F Locate the hook-and-loop tabs on the inside of the porch. They are on each side inside the porch. Use the hook-and-loop tabs to attach the porch frame pole to the tent fabric. Begin at the peak of the porch and work your way down to the base of the tent.



G The base of the porch frame poles will use the pins at the bottom corners of the tent front door. At this location there will already be a tent perimeter pole connected. There are two pins at this location. One is for the side pole already in place and one is for the porch frame pole that you have assembled and are securing in place.



Ⓜ Next, close the porch door and stake out the front corners of the porch by inserting a stake through the bungee loops. Insert a pole through the awning grommet at the front corner of the porch on both sides. The bottom of the pole goes inside the stake bungee loop at the bottom to secure it in place.



Ⓜ Stake down the guy-line that you previously inserted at the peak of the porch in Step 6. Make sure it does not block you from entering and exiting the porch.



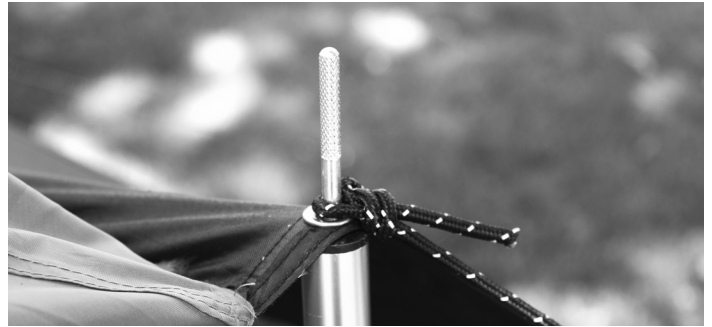
Ⓜ Stake down the porch bungee loops that are closest to the main tent body.



Ⓜ At the awning location where the porch attaches to the main tent there is a grommet that will use the side perimeter pole already in place. At this location, one pole will secure the tent awning and the porch awning.



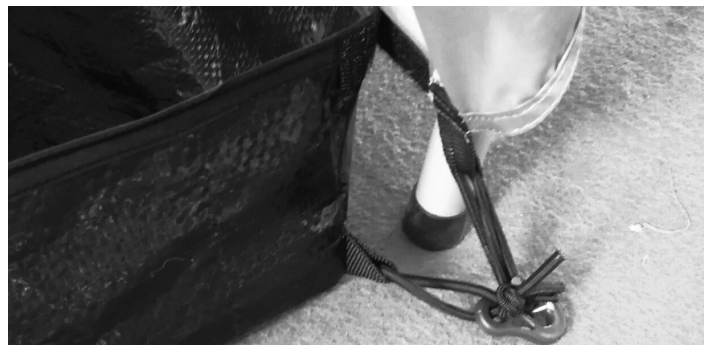
Ⓜ The remaining side poles are used for the two side doors. Unzip the side door on both sides allowing it to open. Put the top of the pole through the awning grommet and insert the metal pin on the stake loop through the bottom of the pole to hold it in place.



Attach the guy-line to the male nipple and stake the guy-lines out. Make sure the guy-lines do not block your access to the door.

REMOVABLE PORCH FLOOR INSTALLATION

Ⓜ Insert the porch floor with the hook-and-loop strips facing the side walls of the porch. Align the floor so the hook-and-loop strips line up with the hook-and-loop strips along the bottom of the porch side walls. Attach the hooks on each corner of the floor to the bungee stake loops to further secure the floor in place.



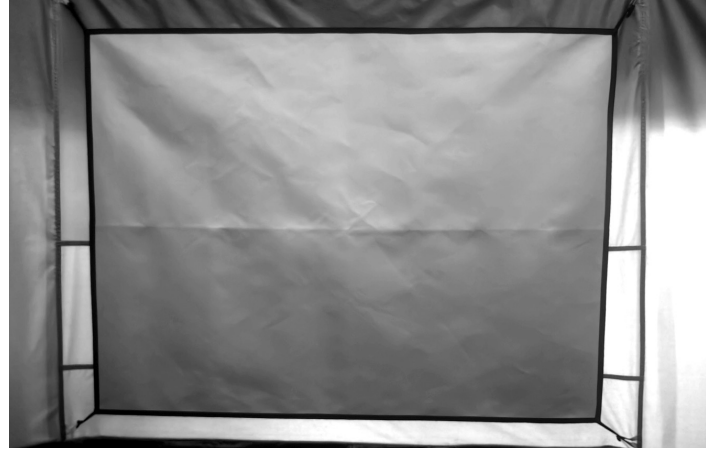
HEAT SHIELD INSTALLATION

A HEAT SHIELD IS INCLUDED TO PROTECT THE TENT WALL NEAREST THE STOVE FROM EXCESSIVE HEAT.

Attention: Be sure the guy-line tension is adequate and ground stakes are correctly installed to support adding an additional accessory to the tent.

1 Inside the tent, locate the loops attached to the bungees on the rear center wall panel.

2 Locate the toggles on each corner of the heat shield. The long side of the heat shield will be horizontal to the ground. Connect the toggles on the heat shield to the rings on the tent wall below the stove jack.



DISASSEMBLY AND STORAGE

TAKE DOWN

Attention: Cleaning, airing out and drying the tent before take down is recommended. Reference the warning page and helpful information page for additional take down details.

A Partly unzip the doors to allow air to escape during take down.

B Reverse steps A through M.

FOLDING

Refer to diagram below for folding instructions.

A Fold your tent walls towards the inside of the tent. Make sure the outside of the tent does not come into contact with the inside of the tent. This will help prevent dust, dirt

and debris from entering the tent before transportation and storage.

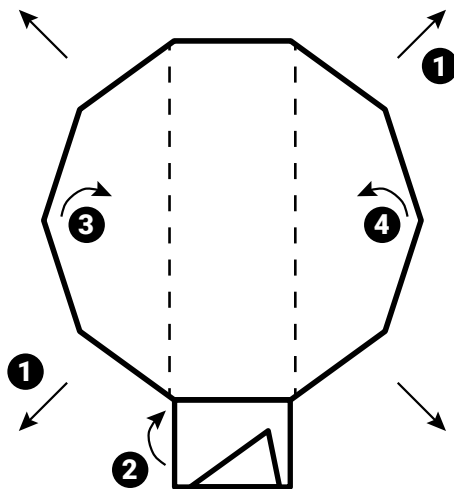
B Locate the perimeter of the floor and pull the fabric snug. (1) This allows the tent to fold neatly.

C Fold the porch roof inward (2), then fold the tent in thirds. (3, 4)

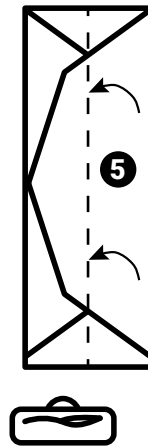
D Use the tent bag or pole bag to measure how small the tent should be folded. Fold evenly to the necessary width (5). The width of the folded tent should be slightly less than the length of the tent bag or pole bag.

E Roll the folded tent tight while carefully squeezing the trapped air from inside. (6)

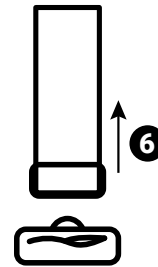
F Place tent into bag. (7)



PULL TENT PERIMETER TIGHT.
FOLD PORCH ROOF INWARD.
FOLD TENT INTO THIRDS.



FOLD TENT TO
LENGTH OF BAG.



ROLL UP
TENT.



PLACE TENT
IN BAG.