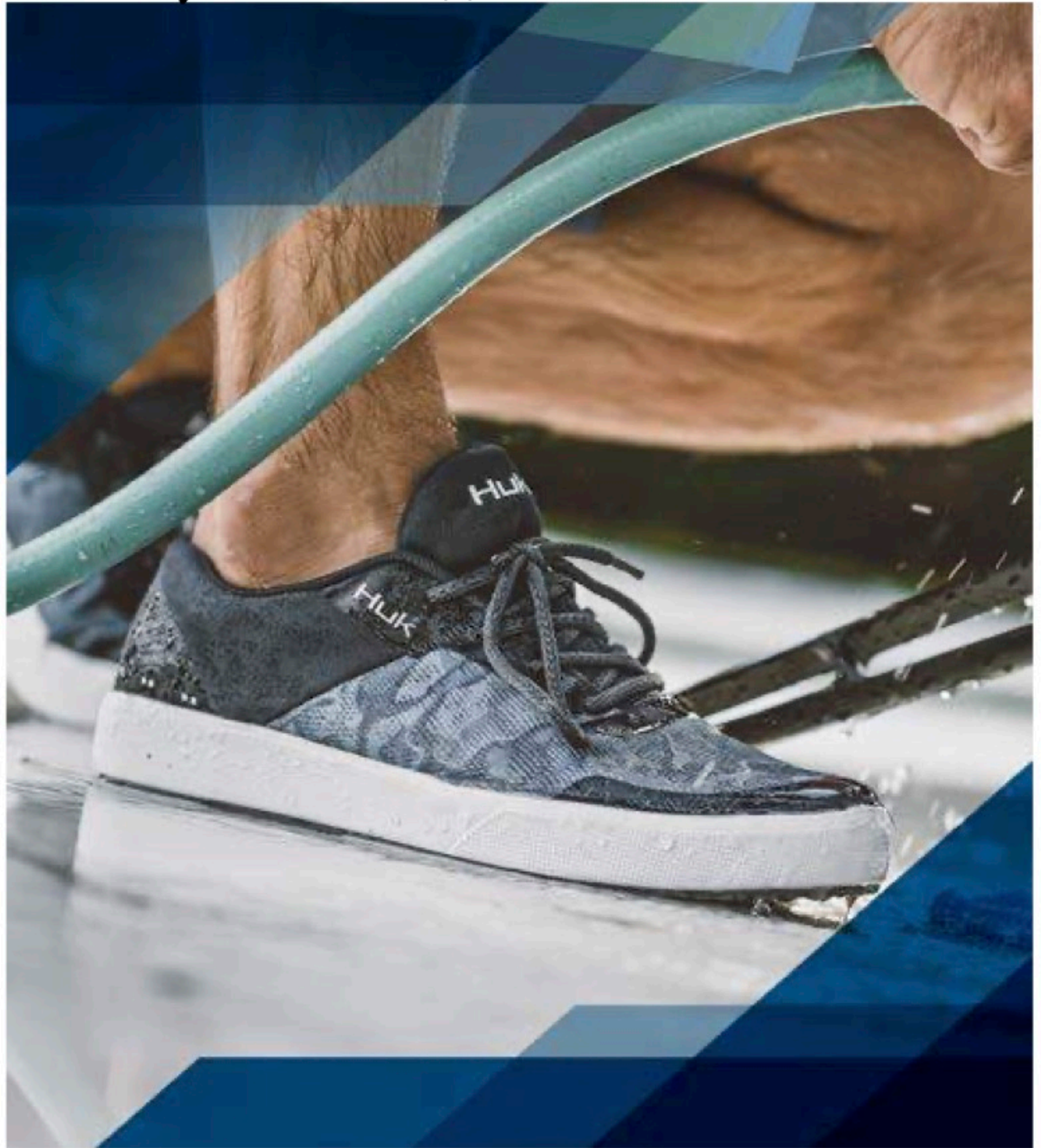


HUK SS22 FOOTWEAR UPDATE 7/13/21





013 _____
Volcanic Ash

NEW

STONE SHORE BREWSTER ATR

H8021013

The Brewster ATR is an amphibious shoe designed to take you in out and around water. Formed from a single-density injected EVA with a contoured arch and cupped heel for advanced support and fit. Drainage holes provide a breathable and risible functionality. Grip X Sole provides no slip traction and in condition around water. Single-density injected EVA, contoured arch for support, cupped heel secure fit, Grip X sole for no slip traction, drain holes for breathability and water flow, lightweight and durable, non marking



\$55.00

7 - 14 WHOLE SIZES ONLY

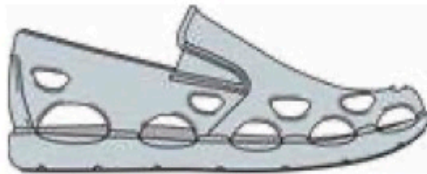


417 _____
Deep Ocean Blue



213 _____
Earth

AVAIL 3/1/22



052 _____
Oyster

NEW

BREWSTER ATR

H8021012

The Brewster is an amphibious shoe designed to take you in out and around water. Formed from a single-density injected EVA with a contoured arch and cupped heel for advanced support and fit. Drainage holes provide a breathable and risible functionality. Grip X Sole provides no slip traction and in condition around water. Single-density injected EVA, contoured arch for support, cupped heel secure fit, Grip X sole for no slip traction, drain holes for breathability and water flow, lightweight and durable, non marking



\$50.00

7 - 14 WHOLE SIZES ONLY



028 _____
Sharkskin



100 _____
White

AVAIL 3/1/2

PERFORMANCE

NEW

BREWSTER ~~BARBED U~~ RUNNING LAKES

H8021008

Comfortable wear-anywhere footwear for the Huk lifestyle. Full length EVA midsole, GRIP-X non-marking outsole, rapid dry mesh upper



013 _____
Volcanic Ash



\$65.00

7, 8-13 WITH HALF SIZES, 14



428 _____
Titanium Blue



032 _____
Overcast Grey

AVAIL 3/1/22

NEW

BREWSTER BARBED U OCEAN PALM

H8021009

Comfortable wear-anywhere footwear for the Huk lifestyle. Full length EVA midsole, GRIP-X non-marking outsole, rapid dry mesh upper



428 _____
Titanium Blue



\$65.00

7, 8-13 WITH HALF SIZES, 14



013 _____
Volcanic Ash



409 _____
Sargasso Sea

CANCELLED

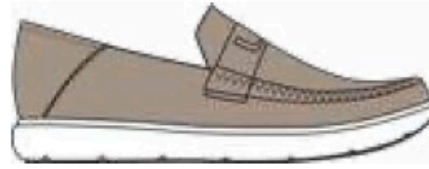
** NEW ** ADD: CLASSIC BREWSTER #H8021016 - MSRP \$60
 013 Volcanic / 020 Grey / 316 Moss / 409 SARGASSO SEA

** NEW ** ADD: CLASSIC MOSSY OAK BREWSTER #H8021017 - MSRP \$65
 922 Mossy Oak Bottomland

** NEW ** ADD: MOSSY OAK MAHI #H8021018 - MSRP \$70
 922 M.O. BOTTOMLAND



922
Mossy Oak
Bottomland



~~As
Bid~~
Cancelled



~~As
Bid~~
409 SARGASSO
SOLID



922
Mossy Oak
Bottomland



~~As
Bid~~
409
SARGASSO
SEA

013
Volcanic Ash

032
Overcast Grey



032
Overcast Grey

013
Volcanic Ash

PERFORMANCE

NEW

~~BREWSTER BARBED U~~ MOSSY OAK

H8021014

Comfortable wear-anywhere footwear for the Huk lifestyle. Full length EVA midsole, GRIP-X non-marking outsole, rapid dry mesh upper



AVAIL 3/1/22

\$65.00

7, 8-13 WITH HALF SIZES, 14

PERFORMANCE

NEW

~~BREWSTER BARBED U~~

H8021010

Comfortable wear-anywhere footwear for the Huk lifestyle. Full length EVA midsole, GRIP-X non-marking outsole, rapid dry mesh upper



AVAIL 3/1/22

\$60.00

7, 8-13 WITH HALF SIZES, 14

NEW

~~RUNNING LAKES MAHI~~ SOLID

H8021005

The Huk Mahi is a story of unrivaled performance through uncompromising feedback. Rapid-dry mesh upper, Molded EVA midsole with drain ports, Huk SLICE traction outsole pattern, Lightweight TPU toe and heel protection, Convenient heel webbing pull strap, 16 ounces per pair



AVAIL 3/1/22

\$65.00

7, 8-13 WITH HALF SIZES, 14



013 _____
Volcanic Ash
AVAIL 1/3/22



922 _____
Mossy Oak
Bottomland
AVAIL 3/1/22



457 _____
Huk Blue
AVAIL 1/3/22



428 _____
Titanium Blue
AVAIL 3/1/22

032 _____
Overcast Grey
AVAIL 3/1/22



922 _____
Mossy Oak
Bottomland



020 _____
Grey
AVAIL 1/3/22

100 _____
White
AVAIL 1/3/22

NEW
RUNNING LAKES ROGUE WAVE

H8021004

The Rogue Wave is engineered for all kinds of nasty conditions. Its full neoprene and rubber upper construction provide durability and comfort. Bring it on, Mother Nature. Rubber and neoprene upper, GRIP-X outsole traction pattern, Thick 8MM molded EVA footbed, Commercial grade reinforced webbing pull-straps, 38 ounces per pair



\$100.00

7- 14 WHOLE SIZES ONLY

NEW
MOSSY OAK ROGUE WAVE

H8021015

The Rogue Wave is engineered for all kinds of nasty conditions. Its full neoprene and rubber upper construction provide durability and comfort. Bring it on, Mother Nature. Rubber and neoprene upper, GRIP-X outsole traction pattern, Thick 8MM molded EVA footbed, Commercial grade reinforced webbing pull-straps, 38 ounces per pair



\$100.00

7- 14 WHOLE SIZES ONLY

NEW
ROGUE WAVE

H8021007

The Rogue Wave is engineered for all kinds of nasty conditions. Its full neoprene and rubber upper construction provide durability and comfort. Bring it on, Mother Nature. Rubber and neoprene upper, GRIP-X outsole traction pattern, Thick 8MM molded EVA footbed, Commercial grade reinforced webbing pull-straps, 38 ounces per pair



\$90.00

7- 14 WHOLE SIZES ONLY

WOMEN'S FOOTWEAR



032 _____
Overcast Gray



687 _____
Desert Flower

NEW

RUNNING LAKES ROGUE WAVE

H6800001

The Rogue Wave is engineered for all kinds of nasty conditions. Its full neoprene and rubber upper construction provide durability and comfort. Bring it on, Mother Nature. Rubber and neoprene upper, GRIP-X outsole traction pattern, Thick 8MM molded EVA footbed, Commercial grade reinforced webbing pull-straps, 38 ounces per pair



\$100.00



339 _____
Beach Glass

AVAIL 3/1/22

5-11, WHOLE SIZES ONLY

NEW

ROGUE WAVE

H6800000

The Rogue Wave is engineered for all kinds of nasty conditions. Its full neoprene and rubber upper construction provide durability and comfort. Bring it on, Mother Nature. Rubber and neoprene upper, GRIP-X outsole traction pattern, Thick 8MM molded EVA footbed, Commercial grade reinforced webbing pull-straps, 38 ounces per pair



\$90.00



100 _____
White

AVAIL 3/1/22

5-11, WHOLE SIZES ONLY