



.....

# LIVESCOPE™ PLUS

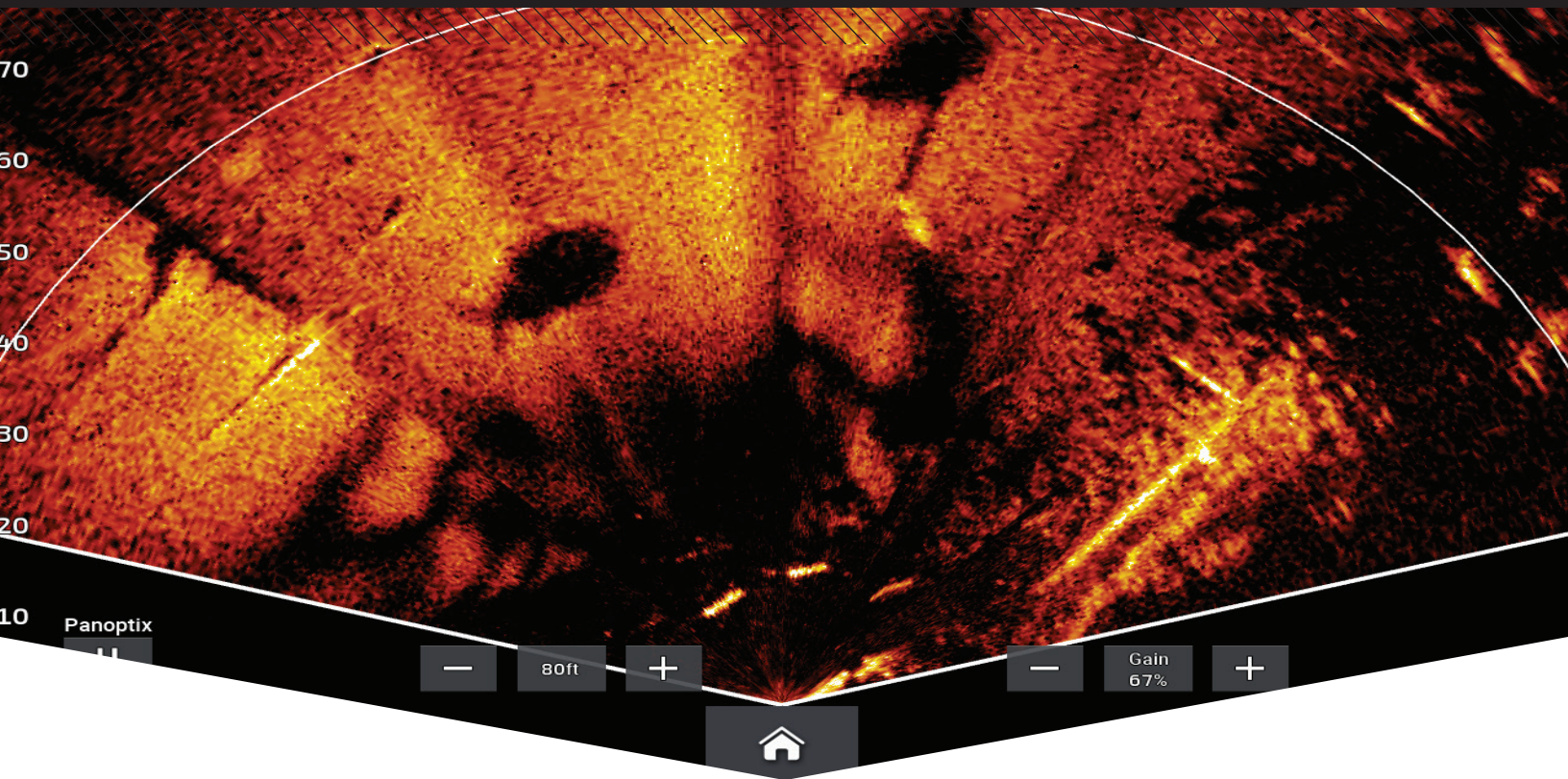
## NEW PRODUCT ANNOUNCEMENT

OVERVIEW | FEATURES | COMPARISON | CONFIGURATIONS  
PACKAGING SPECIFICATIONS | ACCESSORIES | MERCHANDISING

.....

## MARKETING MEMO

Feb. 24, 2022



## PRODUCT OVERVIEW:


The best of the best just got better with the LiveScope Plus System. It's the latest in LiveScope technology, offering improved resolution, reduced noise, clearer images and better target separation. Now it's easier than ever to see structure, bait and fish swimming around your boat in real time. Adjust the transducer to fit where you fish; Forward mode shows what's out in front of your boat and slightly below, Down mode gives you a view of what's directly below, and Perspective mode is great for a top-down view. The view automatically changes on your compatible Garmin chartplotter<sup>1</sup> screen. Attitude heading reference system stabilization keeps your sonar view steady, even in rough conditions. LiveScope Plus includes a trolling motor shaft and barrel mounts plus Perspective Mode Mount.



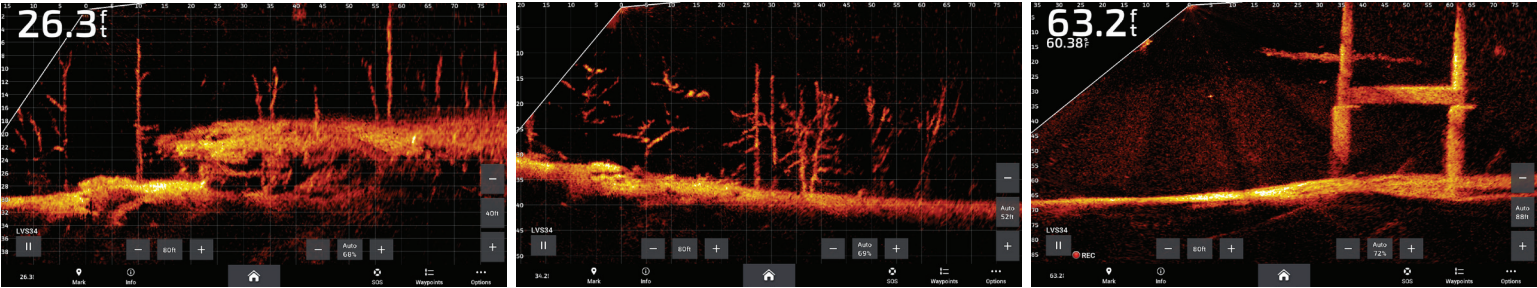
KEY FEATURES:

NEW	HIGH RESOLUTION	35% improved target separation over existing LiveScope System; can separate targets as small as 14” from
NEW	IMAGE SHARPNESS	Brilliantly clear sonar returns, free from noise and on-screen artifacts (less “ghost tree”).
	EASY UPGRADE	The new transducer can be used with an existing LiveScope System black box (GLS 10) for an easy upgrade.
	VIVID COLOR	Compatible with the vivid color palettes for enhanced detail and clarity.
	FORCE COMPATIBLE	Sized to fit Garmin Force trolling motor as well as other leading trolling motors.
NEW	PERSPECTIVE MODE MOUNT	Use all three modes with the included perspective mode mount.

PRODUCT COMPARISON:

	LiveScope Plus	LiveScope
		
Transmit power	500 watts	500 watts
Frequencies supported	530-1,100 kHz	530-1,100 kHz
Max depth forward range	200’	200’
Target separation (100’)	14”	22”
Beam width	20°-135°	20°-135°
Arrays	3	3
Dimensions	162 x 75 x 43 mm	136 x 96 x 43 mm
Perspective Mode mount included	Yes	No
AHRS	Yes	Yes
Install Options	Trolling motor/transom	Trolling motor/transom/thru-hull
Transducer cable length	20’	20’

SCREENS



## PRODUCT CONFIGURATIONS:

SCHEDULE B: 9014802000  
HTS: 9014.80.2000

## LiveScope Plus - System



AVAILABLE	INCLUDES	COUNTRY OF ORIGIN	
March 2022	GLS 10, LVS34, trolling motor barrel mount and shaft mount, perspective mount bracket, power cable, network cable, network adapter cable, documentation.	Made in Taiwan. Cable made in Taiwan or China.	
SKU	UPC	MRP (USD)	MRP (CAD)
010-02706-00	753759298456	\$1,699.99	\$2,199.99

## LiveScope Plus - Transducer Only



AVAILABLE	INCLUDES	COUNTRY OF ORIGIN	
March 2022	LVS34, trolling motor barrel mount and shaft mount, perspective mount bracket.	Made in Taiwan. Cable made in Taiwan or China.	
SKU	UPC	MRP (USD)	MRP (CAD)
010-02706-10	753759298463	\$1,199.99	\$1,559.99

## PACKAGING SPECIFICATIONS:

	LiveScope Plus System	LiveScope Plus Transducer Only
Gift box dimensions (WxHxD):	13.3" x 7.9" x 9.1" (33.9 x 20.0 x 25.7 cm)	10.0" x 8.3" x 5.3" (25.4 x 21.1 x 13.5 cm)
Gift box weight:	27.0 lbs (12.2 kg)	36.3 lbs (16.5 kg)

## PRODUCT COPY:

Product copy for LiveScope Plus can be downloaded from the [Dealer Resource Center](#).

## OPTIONAL ACCESSORIES:

	DESCRIPTION	SKU	UPC	MSRP
	Perspective Mount	010-13228-00	753759298470	\$119.99
	Barrel Mount	010-13228-01	753759298487	\$29.99
	Shaft Mount 8°	010-13228-02	753759298494	\$29.99
	Shaft Mount 0°	010-13228-03	753759298500	\$29.99
	Transom Mount	010-13228-04	753759298517	\$99.99

## MERCHANDISING:

### LiveScope Plus easel sign

Place the sign on a counter and/or inside a display case by your LiveScope Plus products.

SKU: M01-00516-00

Size: 5.5" W x 8.75" H



## INTERCHANGEABLE MERCHANDISING COMPONENTS THAT CAN BE USED ON THE MARINE 2-TIERED DISPLAY

### LiveScope Plus magnetic graphic

SKU: M01-00516-02

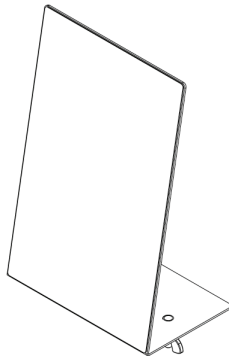
Size: 5.5" W x 8.75" H



### Bracket for the marine 2-tier display

SKU: M01-00516-01

Size: 5.5" W x 8.75" H x 3.55" D



Magnetic graphic and bracket in use on the marine 2-tiered display

\*Compatible with GPSMAP® 8400/ GPSMAP 8600 chartplotter series, GPSMAP x2 Plus, GPSMAP x3, ECHOMAP™ Ultra combo, ECHOMAP UHD 7" and ECHOMAP UHD 9"

Please note: The ECCNs and Classification numbers provided represent the opinion of Garmin International, Inc. of the proper classifications for the products today (based on the original software and/or original hardware). Classifications are subject to change. Under the U.S. export regulations, the U.S. Government assigns your organization or client, as exporter/importer of record, the responsibility for determining the correct classification of any item at the time of export/import. Depending on the products, the customer, or the country of destination, an export license may be required by the Department of Commerce prior to shipment. The Department of Commerce's Bureau of Industry and Security (former Bureau of Export Administration) website (<http://www.bis.doc.gov>) provides information that might be useful to you in determining whether you need to obtain a license for a particular shipment. To be clear, if an item described above does require a validated export license, it would be the exporter's responsibility to obtain this license prior to exportation.