



BEST RODS ON EARTH

# ICE



2023  
CATALOG

# WE UNDERSTAND THE PASSION. IT GOT US HERE.

The pride and satisfaction you feel when you fish a St. Croix rod is our motivation every single day. And while we are proud of our 75-year legacy of handcrafting the Best Rods on Earth that give anglers like you the upper hand, we remain laser-focused on the future, starting with today.

St. Croix Rod is unrelenting in our mission to discover new materials and technologies for the benefit of anglers. From the proprietary tubular carbon and tubular carbon and glass extra-fast blanks found throughout the Croix Custom Ice Series, to the durable new agglomerated cork handles and line-taming triangular guides on Skandic Series rods, we constantly seek out, combine, test, and refine new materials and technologies to engineer and craft precision fishing tools that make you a better angler than you were yesterday.

Our 2023 Ice Catalog includes 64 distinct ice rods and ice combos to support elevated angling in any ice-fishing technique or presentation. Need more information? Our Angler Guides in the St. Croix Guide Center in Park Falls would be happy to answer your questions so you can make the best possible decision, as would any of our trusted St. Croix dealers around the world.

Thank you for the trust and confidence you've placed in us to add value to your precious time and experiences on the water. You're what drives us every day, because at St. Croix Rod, your passions are our passions...

*and we're just getting started.*



## Contents ★ New model for 2023

02 | The St. Croix Brand

04 | Croix Custom Ice

06 | Tundra

08 | Skandic

10 | Legend Black

12 | Mojo Ice

★ 14 | Panfish Ice Combo

16 | Premier™ Series Ice Combo



# CROIX CUSTOM ICE



## CROIX CUSTOM ICE BLANK MATERIALS



### SC SOLID CARBON

Solid carbon has been the most popular material used for premium ice rods for years. St. Croix's advanced solid carbon provides an ideal combination of maximum action, sensitivity and strength with minimal weight and is ideal for extra-fast action rods.

**Use:**  
Optimal for finesse panfish applications including fishing tungsten, lead, plastics and live bait where control is critical.

Precision taper engineered by St. Croix.

FEATURED ON  
CI20LXF, CI24LXF

### SG SOLID GLASS

Solid glass has been a primary material for ice rods for decades. St. Croix's solid glass delivers perfect tapers for fishing jigs or spoons so you gain all of the bite detection capability without sacrificing control or hook-setting ability.

**Use:**  
Ideal for panfish and walleye applications especially jigs and spoons.

Precision taper engineered by St. Croix.

FEATURED ON  
CI28LXF, CI28MLXF, CI32LXF

### TC TUBULAR CARBON

St. Croix created an all-new carbon material for specific use on Croix Custom Ice. Tubular carbon delivers the most sensitive and lightweight ice blanks for the ultimate in modern walleye angling.

**Use:**  
Created specifically for hardcore walleye anglers utilizing search baits and spoons.

Blank manufactured in Park Falls, WI.

FEATURED ON  
CI32MF, CI36MF, CI36MHF

### TCG TUBULAR CARBON/ GLASS

In addition to creating an all-new carbon material, St. Croix engineered an all-new glass material for exclusive use on Croix Custom Ice. With a dynamic blend of carbon and glass patterns in a tubular construction, these blanks are extremely light in weight and provide exceptional sensitivity and tip flex for superior bite detection plus controlling large predators.

**Use:**  
Superb all-purpose designs for walleye and perch and ideal for power jiggging apex predators.

Blank manufactured in Park Falls, WI.

FEATURED ON  
CI28MLF, CI30MXF, CI32MLF, CI32MLXF, CI36MLF, CI38MXF, CI42HM

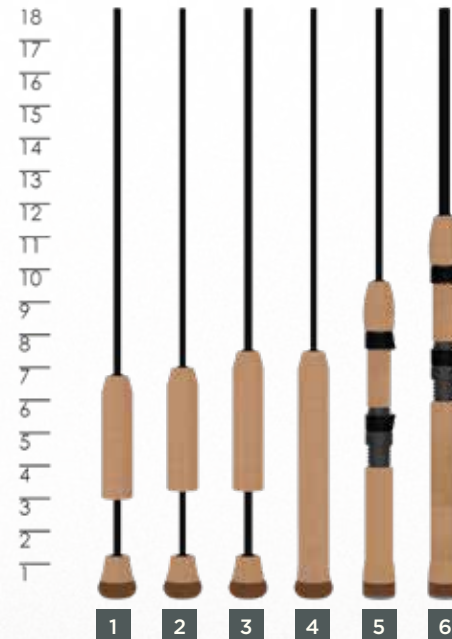
### TCFG TUBULAR CARBON FUSED TO GLASS

St. Croix combines carbon and glass materials together by fusing tubular carbon and tubular glass at a specific location creating an exclusive blank design. This unique blank creates the lightest and best-balanced dead stick on the market.

**Use:**  
Perfectly suited as a dead stick rod for walleye.

Blank manufactured in Park Falls, WI.

FEATURED ON  
CI32MM



Handle measurements shown in inches.

## CROIX CUSTOM ICE RODS

MODEL	TECHNIQUE	LGTH.	PWR.	ACTION	BLANK MATERIAL	HANDLE	PRICE
CI20LXF	SIGHT-BITE	20"	L	X-FAST	SC	1	\$140
CI24LXF	PAN FINESSE	24"	L	X-FAST	SC	1	\$150
CI28LXF	MICRO SPOON	28"	L	X-FAST	SG	2	\$140
CI28MLXF	TUNGSTEN TAMER	28"	ML	X-FAST	TCG	2	\$140
CI28MLF	PERCH/EYE SPOON	28"	ML	FAST	SG	2	\$150
CI30MXF	HOUSE ROD	30"	M	X-FAST	TCG	4	\$150
CI32LXF	PAN DANCER	32"	L	X-FAST	SG	3	\$150
CI32MLF	DEEP SPOON	32"	ML	FAST	TCG	3	\$150
CI32MF	SEARCH BAIT	32"	M	FAST	TC	3	\$150
CI32MM	DEAD EYE	32"	M	MOD.	TCFG	3	\$150
CI32MLXF	PERCH SEEKER	32"	ML	X-FAST	TCG	3	\$150
CI36MF	OUTSIDE EYE	36"	M	FAST	TC	3	\$160
CI36MLF	SPOON HOPPER	36"	ML	FAST	TCG	3	\$160
CI36MHF	TROPHY TAKER	36"	MH	FAST	TC	3	\$160
CI38MXF	EYE RAISER	38"	M	X-FAST	TCG	5	\$160
CI42HM	APEX PREDATOR	42"	H	MOD.	TCG	6	\$170

## BLANK

PRIMARY MATERIAL  
**TUBULAR CARBON**

SECONDARY MATERIAL  
**FIBERGLASS**

## GUIDES

PRIMARY FRAME MATERIAL  
**TITANIUM**

## REEL SEAT

PRIMARY MATERIAL  
**NYLON**

PRIMARY NUT MATERIAL  
**NYLON**

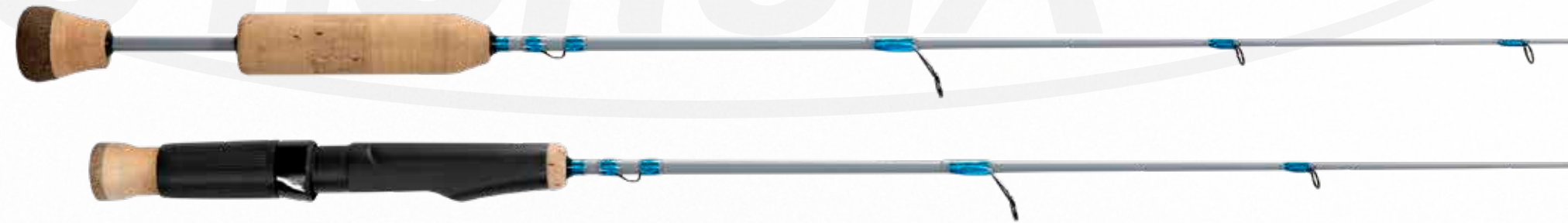
SECONDARY NUT MATERIAL  
**STAINLESS STEEL**

## HANDLE

PRIMARY MATERIAL  
**SUPER GRADE CORK**

BUTT CAP  
**CORK COMPOSITE**

# TUNDRA



**HANDCRAFTED**  
by  
**ST. CROIX**  
ESTD ★ 1948

## BLANK

PRIMARY MATERIAL  
**SOLID CARBON**

SECONDARY MATERIAL  
**SOLID FIBERGLASS**

## GUIDES

PRIMARY RING MATERIAL  
**STAINLESS STEEL**

PRIMARY FRAME MATERIAL  
**STAINLESS STEEL**

SECONDARY FRAME MATERIAL  
**TITANIUM**

## REEL SEAT

PRIMARY MATERIAL  
**NYLON**

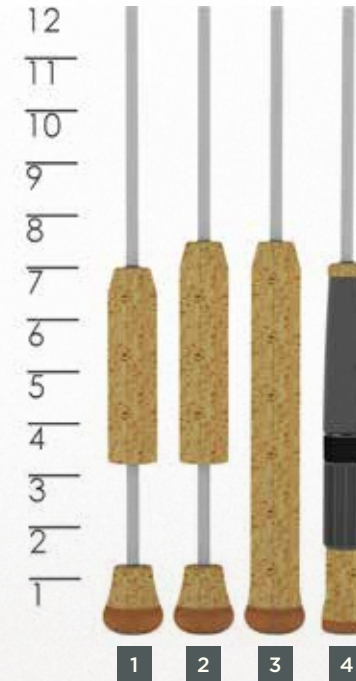
PRIMARY NUT MATERIAL  
**NYLON**

SECONDARY NUT MATERIAL  
**STAINLESS STEEL**

## HANDLE

PRIMARY MATERIAL  
**CORK**

BUTT CAP  
**CORK COMPOSITE**



Handle measurements shown in inches.

## TUNDRA ICE RODS

MODEL	LGTH.	PWR.	ACTION	BLANK MATERIAL	HANDLE	PRICE
SCT26LXF	26"	L	X-FAST	SG	1	\$105
SCT27MF	27"	M	FAST	SC	3	\$120
SCT27MLF	27"	ML	FAST	SC	2	\$120
SCT30LXF	30"	L	X-FAST	SG	1	\$105
SCT30MF	30"	M	FAST	SC	3	\$125
SCT30MLF	30"	ML	FAST	SC	2	\$125
SCT34LXF	34"	L	X-FAST	SG	1	\$105
SCT36MF	36"	M	FAST	SC	3	\$135
SCT36MHF	36"	MH	FAST	SC	4	\$135

• SC = SOLID CARBON, SG = SOLID GLASS

# SKANDIC



**HANDCRAFTED**  
by  
**ST. CROIX**  
ESTD ★ 1948

## BLANK

PRIMARY MATERIAL  
**SOLID CARBON**

## GUIDES

PRIMARY RING MATERIAL  
**STAINLESS STEEL**

PRIMARY FRAME MATERIAL  
**STAINLESS STEEL**

## REEL SEAT

PRIMARY MATERIAL  
**NYLON**

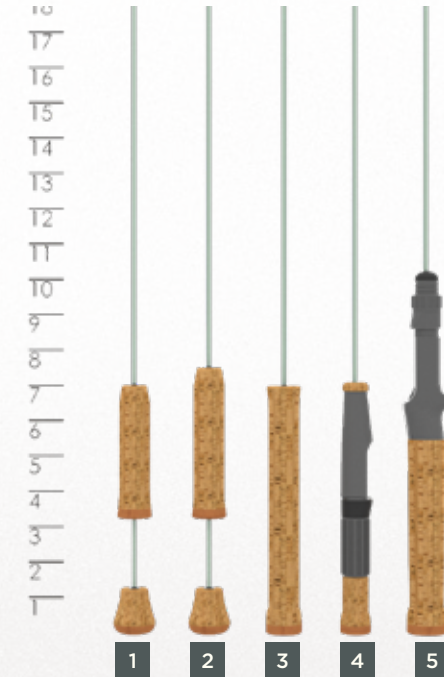
PRIMARY NUT MATERIAL  
**NYLON**

SECONDARY NUT MATERIAL  
**STAINLESS STEEL**

## HANDLE

PRIMARY MATERIAL  
**AGGLOMERATED  
CORK**

BUTT CAP  
**CORK COMPOSITE**



Handle measurements shown in inches.

## SKANDIC ICE RODS

MODEL	LGTH.	PWR.	BLANK MATERIAL	HANDLE	PRICE
SKAS24UL	24"	UL	SC	1	\$75
SKAS24ML	24"	ML	SC	2	\$75
SKAS24M	24"	M	SC	3	\$75
SKAS28UL	28"	UL	SC	1	\$80
SKAS28ML	28"	ML	SC	2	\$85
SKAS28M	28"	M	SC	3	\$85
SKAS32M	32"	M	SC	3	\$90
SKAC34MH	34"	MH	SC	5	\$110
SKAC34H	34"	H	SC	5	\$110
SKAS36L	36"	L	SC	2	\$85
SKAS36M	36"	M	SC	3	\$100
SKAS36MH	36"	MH	SC	4	\$100

• SC = SOLID CARBON, SG = SOLID GLASS

# LEGEND BLACK



## BLANK

PRIMARY MATERIAL  
**SOLID CARBON**

## GUIDES

PRIMARY RING MATERIAL  
**STAINLESS STEEL**

PRIMARY FRAME MATERIAL  
**STAINLESS STEEL**

## REEL SEAT

PRIMARY MATERIAL  
**NYLON**

PRIMARY NUT MATERIAL  
**NYLON**

SECONDARY NUT MATERIAL  
**STAINLESS STEEL**

## HANDLE

PRIMARY MATERIAL  
**PREMIUM EVA**

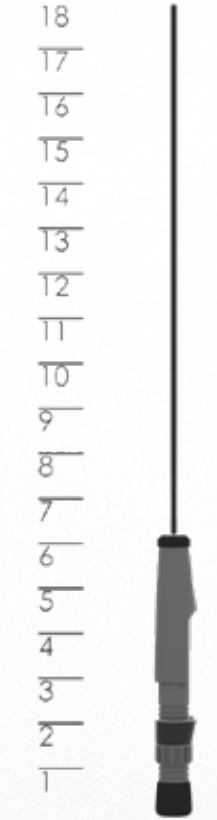
BUTT CAP  
**PREMIUM EVA**

Orange Spring Bobber - Light Tension

Pink Spring Bobber - Medium Tension

Yellow Spring Bobber - Medium Heavy Tension

Green Spring Bobber - Heavy Tension



Handle measurements shown in inches.

## LEGEND® BLACK ICE RODS

MODEL	LGTH.	PWR.	BLANK MATERIAL	HANDLE	PRICE
LBI24UL	24"	UL	SC	1	\$80
LBI24L	24"	L	SC	1	\$80
LBI24ML	24"	ML	SC	1	\$80
LBI24M	24"	M	SC	1	\$80
LBI30L	30"	L	SC	1	\$85
LBI30ML	30"	ML	SC	1	\$85
LBI30M	30"	M	SC	1	\$85

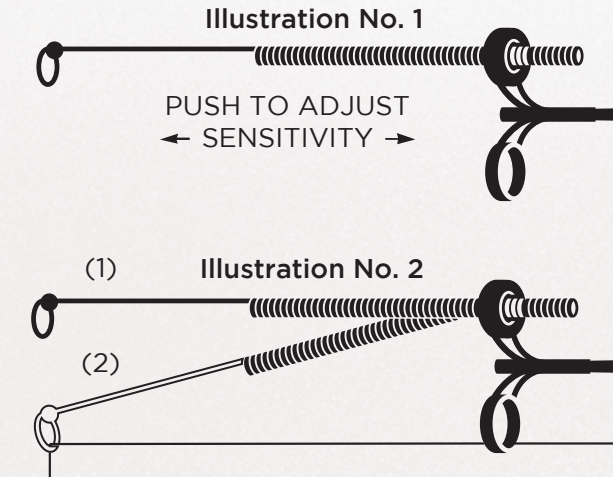
• SC = SOLID CARBON, SG = SOLID GLASS

## ICE ROD STRIKE INDICATOR SYSTEM

### HOW IT WORKS:

St. Croix's strike indicator system is adjustable, so its sensitivity level can accommodate different lure sizes. To make the bobber more sensitive, push the spring forward through the grommet. To make it less sensitive, push it back. (Illustration no. 1)

The system is most sensitive when there is a 30-degree bend (position 2) in the spring. To find the bottom, lower the jig until the indicator returns to position 1. Then, either slowly reel up once or lift the rod slightly until the indicator is back to position 2. (Illustration no. 2)



## BLACK SUPER FINESSE SPRINGS

MODEL	TENSION	RETAIL
BSFS-L	L	\$14
BSFS-M	M	\$14
BSFS-MH	MH	\$14
BSFS-H	H	\$14

# MOJO ICE



**HANDCRAFTED**  
by  
**ST. CROIX**  
ESTD ★ 1948

## BLANK

PRIMARY MATERIAL  
**SOLID CARBON**

## GUIDES

PRIMARY RING MATERIAL  
**STAINLESS STEEL**

PRIMARY FRAME MATERIAL  
**STAINLESS STEEL**

## REEL SEAT

PRIMARY MATERIAL  
**NYLON**

PRIMARY NUT MATERIAL  
**NYLON**

SECONDARY NUT MATERIAL  
**STAINLESS STEEL**

## HANDLE

PRIMARY MATERIAL  
**PREMIUM EVA**

BUTT CAP  
**PREMIUM EVA**

18  
17  
16  
15  
14  
13  
12  
11  
10  
9  
8  
7  
6  
5  
4  
3  
2  
1



Handle measurements shown in inches.

## MOJO ICE RODS

MODEL	LGTH.	PWR.	BLANK MATERIAL	HANDLE	PRICE
MJI24UL	24"	UL	SC	1	\$55
MJI24ML	24"	ML	SC	1	\$55
MJI24M	24"	M	SC	1	\$55
MJI28UL	28"	UL	SC	1	\$55
MJI28ML	28"	ML	SC	1	\$55
MJI28M	28"	M	SC	1	\$55
MJI32M	32"	M	SC	1	\$60
MJIC34MH	34"	MH	SC	2	\$65
MJIC34H	34"	H	SC	2	\$65
MJI36L	36"	L	SC	1	\$60
MJI36M	36"	M	SC	1	\$60
MJI36MH	36"	MH	SC	1	\$65

• SC = SOLID CARBON, SG = SOLID GLASS

# PANFISH ICE COMBO



**BLANK**  
PRIMARY MATERIAL  
**SOLID CARBON**

**GUIDES**  
PRIMARY RING MATERIAL  
**STAINLESS STEEL**  
  
PRIMARY FRAME MATERIAL  
**STAINLESS STEEL**

**REEL SEAT**  
PRIMARY MATERIAL  
**NYLON**  
  
PRIMARY NUT MATERIAL  
**NYLON**  
  
SECONDARY NUT MATERIAL  
**STAINLESS STEEL**

**HANDLE**  
PRIMARY MATERIAL  
**PREMIUM EVA**  
  
BUTT CAP  
**PREMIUM EVA**

**BODY**  
PRIMARY MATERIAL  
**COMPOSITE**  
  
SPOOL MATERIAL  
**ALUMINUM**  
  
MAIN SHAFT MATERIAL  
**STAINLESS STEEL**  
  
GRIP MATERIAL  
**PREMIUM EVA**

**BEARINGS & GEARING**  
BALL BEARING  
**8**  
  
ROLLER BEARING  
**1**  
  
GEAR RATIO  
**6.2:1**

**FOLDABLE HANDLE:**



Handle measurements shown in inches.

**PANFISH ICE COMBO**

MODEL	LGTH.	PWR.	BLANK MATERIAL	REEL SIZE	HANDLE	PRICE
PFI28UL-C	28"	UL	SC	800	1	\$95
PFI32L-C	30"	UL	SC	800	1	\$100
PFI36L-C	36"	L	SC	800	1	\$105

• SC = SOLID CARBON, SG = SOLID GLASS





# PREMIER™ SERIES ICE COMBO



HANDCRAFTED  
by  
ST. CROIX  
ESTD ★ 1948

## BLANK

PRIMARY MATERIAL  
**SOLID CARBON**

## GUIDES

PRIMARY RING MATERIAL  
**STAINLESS STEEL**

PRIMARY FRAME MATERIAL  
**STAINLESS STEEL**

## REEL SEAT

PRIMARY MATERIAL  
**NYLON**

PRIMARY NUT MATERIAL  
**NYLON**

SECONDARY NUT MATERIAL  
**STAINLESS STEEL**

## HANDLE

PRIMARY MATERIAL  
**CORK**

BUTT CAP  
**CORK COMPOSITE**

## BODY

PRIMARY MATERIAL  
**COMPOSITE**

SPOOL MATERIAL  
**ALUMINUM**

MAIN SHAFT MATERIAL  
**STEEL**

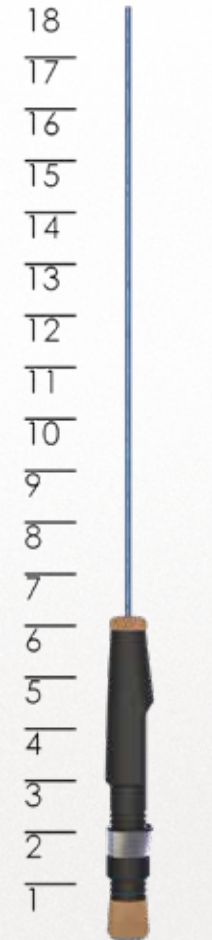
GRIP MATERIAL  
**RUBBER PADDLE**

## BEARINGS & GEARING

BALL BEARING  
**2**

ROLLER BEARING  
**1**

GEAR RATIO  
**6.2:1**



Handle measurements shown in inches.

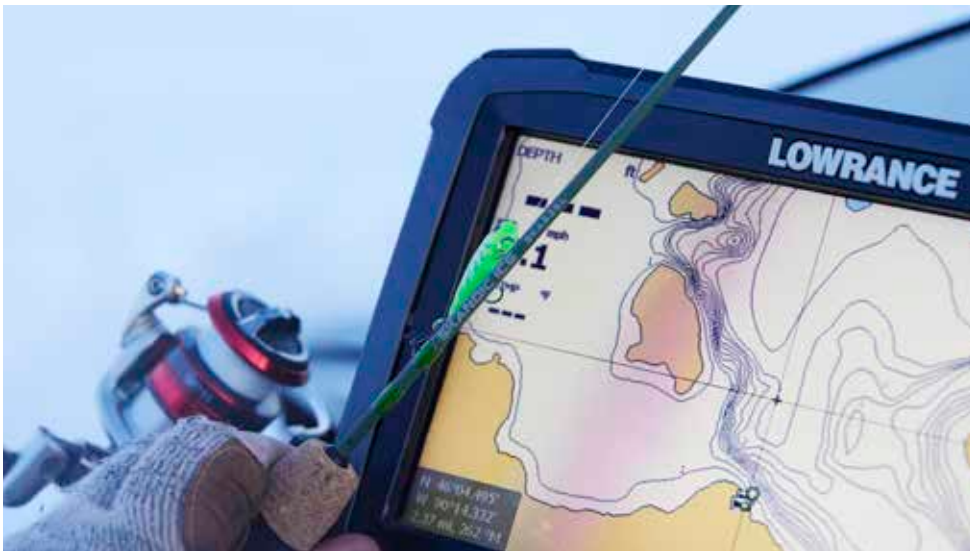
## PREMIER™ SERIES ICE COMBO

MODEL	LGTH.	PWR.	BLANK MATERIAL	REEL SIZE	HANDLE	PRICE
PIC24ML	24"	ML	SC	500	1	\$75
PIC28M	28"	M	SC	500	1	\$80
PIC28ML	28"	ML	SC	500	1	\$80
PIC36M	36"	M	SC	500	1	\$85
PIC36MH	36"	MH	SC	500	1	\$85

• SC = SOLID CARBON, SG = SOLID GLASS



# Get Out and Fish



[f](#) [t](#) [i](#) [stcroixrods.com](#)