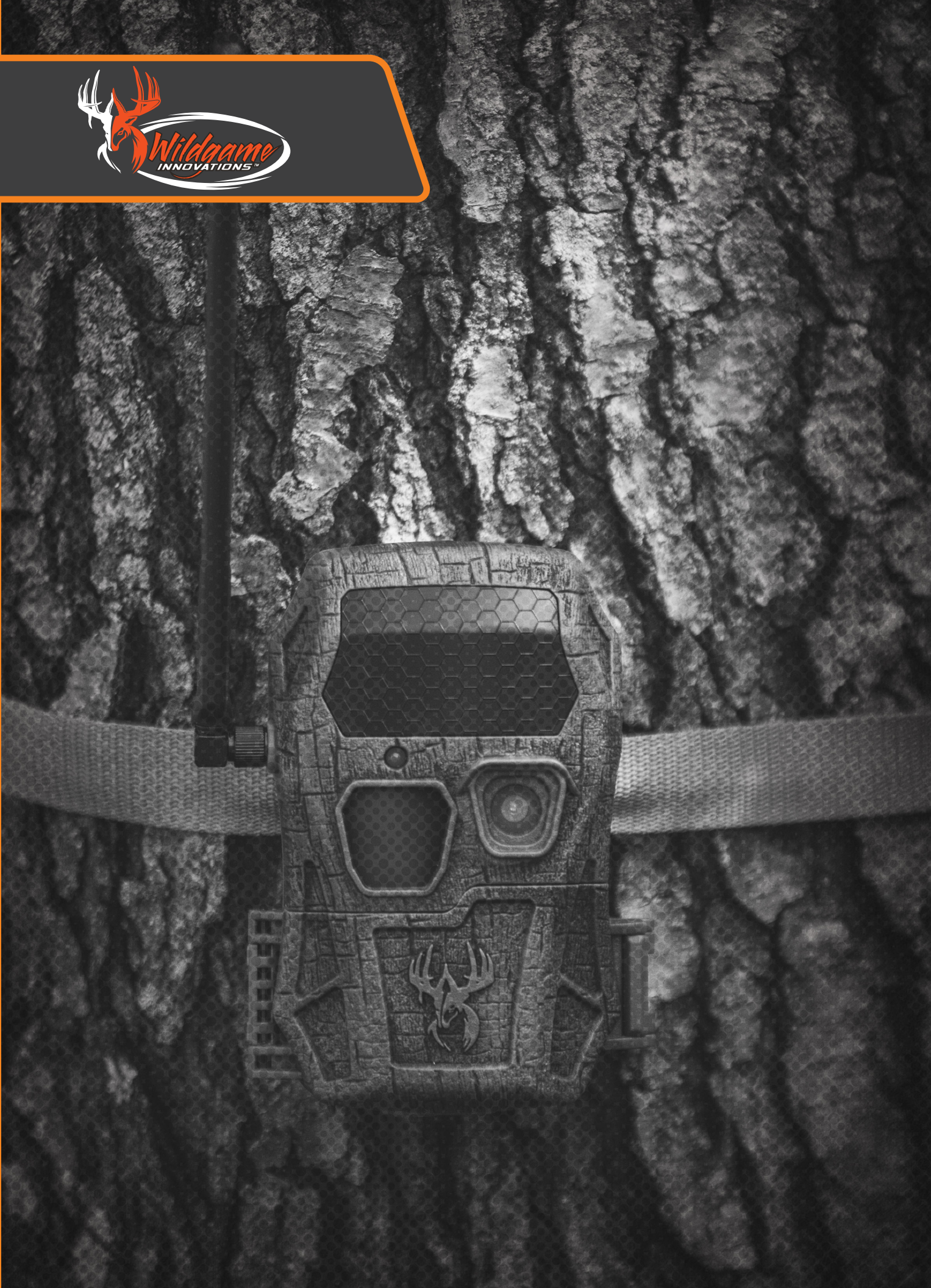








WILDGAME INNOVATIONS

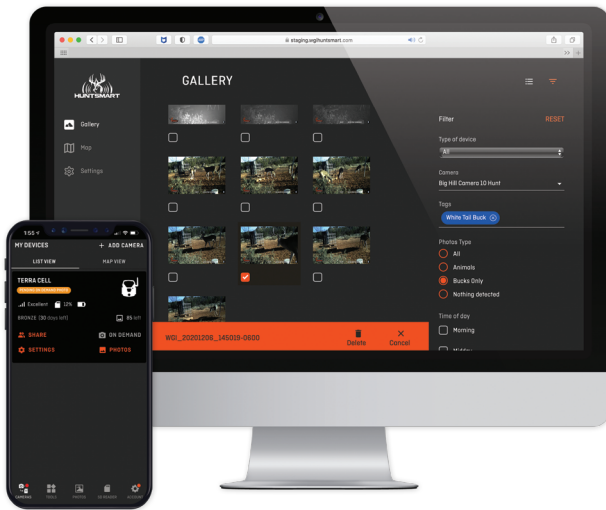






**HUNTSMART**  
FREE ULTIMATE SCOUTING APP

HuntSmart® analyzes your photos in order to make you a smarter and more efficient hunter. Tag, filter, sort and organize all your images then set up a network to share with friends and family. Utilize these in-app scouting features on your mobile device or desktop interface with any of your current game cameras.



**HIT LIST TRACKER**

Ability to tag a specific buck and track movements



**HUNT PREDICTOR**

Utilize all data to predict best time, date and location to hunt in the future



**MAPPING TOOLS & GPS SYNC**

Positions camera location on a map



**SHAREABLE**

Allows you to set up a family and friend network to view and manage photos



**A.I. IMAGE RECOGNITION**

No animal, buck, doe, by species, specific animal tagging



**WEATHER & MOON PHASE**

Information provided per photo (wind, temp, barometric pressure, moon phase and forecast) to give you the best days, times and locations to hunt



**PHOTO SORTING**

Filter and sort images on date, time of day, weather, location, moon phase, species and more



**SPECIES IDENTIFICATION**

Buck, doe, turkey, hog, coyote, fox, bobcat and more



**BUCK SCORING**

Ability to score your buck utilizing B&C scoring system



NEW FOR 2023

ENCOUNTER XT



**34.0**  
MEGAPIXEL

**80-FT**  
DETECTION & IR RANGE

**720P HD**  
WITH AUDIO

WGI-ENCTRCC

UPC: 813628009832

NETWORK: DUAL

- ON DEMAND - Photo / Video capture
- Dual network AT&T and Verizon carrier with preinstalled SIM cards
- Auto detect which carrier has the best signal
- HD photo upload via HuntSmart® app
- 34 megapixels / 8 megapixels / 4 megapixels
- 80-ft. detection & IR range
- 1 – 3 Photo burst
- Time / Date / Moon Phase / Temperature / Camera Name
- 5s – 180s Recovery Timeout
- ¼-20 Threaded Insert
- Integrated Python Lock Latch



NEW FOR 2023

TERRA CELL XT



**24.0**  
MEGAPIXEL

**80-FT**  
DETECTION & IR RANGE

WGI-TERACC

UPC: 813628008873

NETWORK: DUAL

- ON DEMAND - Photo / Video capture
- Dual network AT&T and Verizon carrier with preinstalled SIM cards
- Auto detect which carrier has the best signal
- HD photo upload via HuntSmart® app
- 24 megapixels / 8 megapixels / 4 megapixels
- 80-ft. detection & IR range
- 1 – 3 Photo burst
- Time / Date / Moon Phase / Temperature / Camera Name
- 5s – 180s Recovery Timeout
- ¼-20 Threaded Insert
- Integrated Python Lock Latch







**MIRAGE 2.0**



**30.0**  
MEGAPIXEL

**90-FT**  
DETECTION & IR RANGE

**720P HD**  
DAY & NIGHT

WGI-MIRG2  
WGI-MIRG2LO

UPC: 888151039182\_STANDARD  
UPC: 888151039175\_LIGHTSOUT

- 30 megapixels
- 720P HD day & night
- 90-ft. detection & IR range
- Wide angle 16:9 aspect ratio
- 15 second HD video
- Trigger speed @ 0.6 seconds
- 36 - 850nm LED's | 42 - 940nm LED'S



**WRAITH 2.0**



**26.0**  
MEGAPIXEL

**70-FT**  
DETECTION & IR RANGE

**720P HD**  
DAY & NIGHT

WGI-WRTH2  
WGI-WRTH2LO

UPC: 888151039847\_STANDARD  
UPC: 888151039861\_LIGHTSOUT

- 26 megapixels
- 720P HD day & night
- 70-ft. detection & IR range
- Wide angle 16:9 aspect ratio
- 15 second HD video
- Trigger speed @ 0.65 seconds
- 28 - 850nm LED's | 40 - 940nm LED'S



**KICKER 2.0**



**18.0**  
MEGAPIXEL

**60-FT**  
DETECTION & IR RANGE

**720P HD**  
DAY & NIGHT

WGI-KICK2  
WGI-KICK2LO

UPC: 888151039854\_STANDARD  
UPC: 888151039878\_LIGHTSOUT

- 18 megapixels
- 720P HD day & night
- 60-ft. detection & IR range
- Wide angle 16:9 aspect ratio
- 15 second HD video
- Trigger speed @ 0.7 seconds
- Time, date & moon phase stamp





**TERRA EXTREME 2.0**



**16.0** MEGAPIXEL | **60-FT** DETECTION & IR RANGE | **720P HD** DAY & NIGHT

WGI-TERAX

UPC: 888151039250

- 16 megapixels
- 720P HD day & night
- 60-ft. detection range
- Wide angle 16:9 aspect ratio
- 15 second HD video
- Trigger speed @ 0.7 seconds
- Time, date & moon phase stamp



**SPARK**



**18.0** MEGAPIXEL | **70-FT** DETECTION & IR RANGE | **720P HD** DAY & NIGHT

WGI-SWTC2K  
WGI-SWTC2LOK

UPC: 888151039991\_STANDARD  
UPC: 888151040003\_LIGHTSOUT

- 18 megapixels
- 720P HD day & night
- 70-ft. detection & IR range
- Wide angle 16:9 aspect ratio
- Atomic Clock time synchronization
- Easy switch programming
- Includes 8 AA batteries and one 16 GB SD card







**SD CARD READER FOR APPLE®**

**WGI-WGICA0034**      UPC: 616376511615

- Apple® approved device
- Instantly review trail camera photos and videos in the field
- No batteries or cell service required
- Compatible with Apple® devices with a Lightning® connection port
- SD card not included



**SD CARD READER FOR ANDROID™**

**WGI-WGICA0029**      UPC: 616376509001

- Instantly review trail camera photos and videos in the field
- No batteries or cell service required
- Compatible with all Android™ devices with a micro USB or Type C connection port
- SD card not included



**SD CARD HOLDER**

**WGI-SDCH**      UPC: 888151038758

- Foam inserts protect memory cards
- Latch keeps contents secure inside
- Slim profile fits inside pocket or gear bag
- Round edges won't catch or snag
- SD cards not included



**SD CARDS**

**WGI-WGICA0035**      UPC: 616376511820

- 16GB – 2-Pack

**WGI-WGICA0036**      UPC: 616376511837

- 16GB

**WGI-WGICA0037**      UPC: 616376511844

- 32GB

- Store, organize and archive images/videos
- Compatible with all SD-compliant trail cameras and devices
- Class 10



**TRAIL PAD TABLET**

**WGI-WGIVW0009**      UPC: 616376511608

- Oversized 7-inch HD backlit TFT touch screen
- Zooms, swipes and navigates just like other tablet devices
- Dual SD card reader simplifies in-field file viewing and organization
- Primary port houses SD card with full library of images and videos
- Secondary port saves favorites to designated archive SD card
- Built-in speaker supports audio during video playback



**TRAIL PAD SWIPE**

**WGI-WGIVW0007**      UPC: 616376509063

- Handheld media viewer for in-field use
- Compact, lightweight design
- Heavy-duty, water-resistant housing Touch screen and push-button navigation
- Zoom in/out functionality
- Holds up to 32 GB SD card







**ZERO TRACE™ GEAR BAG** PureION™

WGI-WGIZTB001      UPC: 616376001666

- Includes Zero Trace™ Charge lithium ion unit (rechargeable)
- 10+ hour run time
- Size – 120 liters 16 inches x 16 inches x 32 inches
- Scent proof, water resistant, welded seam design
- Safe, ozone-free scent elimination that won't damage clothing/gear



**ZERO TRACE™ CHARGE** PureION™

WGI-WGIPGB001      UPC: 616376001536

- Rechargeable lithium-ion battery
- The portable generator is safe to breathe and use indoors, vehicles or storage areas
- Zero Trace™ removes up unwanted odors so you can clean your gear without having to wash it



**ZERO TRACE™ PORTABLE** PureION™

WGI-WGIPG0006      UPC: 616376001154

- Multiple power options to reduce your scent anywhere you go
- The portable generator is safe to breathe and use indoors, vehicles or storage areas
- Zero Trace™ removes up unwanted odors so you can clean your gear without having to wash it



**ZERO TRACE™ VEHICLE** PureION™

WGI-WGIPG0005      UPC: 616376001147

- More than an air freshener, this generator safely reduces scent contaminants in your vehicle. Simply plug into your 12/24-volt outlet and go



**ZERO TRACE™** PureION™

WGI-WGIPG0001      UPC: 616376511813

WGI-WGIPG0002      UPC: 616376512216

- Field Unit
- Replacement Battery
- Ultra-quiet fan spreads healthy ion particle flow
- Re-chargeable battery pack with USB port
- Approx. 6 hours of battery life
- Durable TRUBark™ texture for additional concealment
- Lightweight with adjustable magnetic mounting unit



**ZERO TRACE™ HOME** PureION™

WGI-WGIPGH101      UPC: 616376001086

WGI-WGIPGH104      UPC: 616376001239

- Home Unit – White
- Pet Unit – Grey
- Eliminates unwanted odors rather than masking them
- Optimized for in-home use – safe for pets, kids and small spaces
- Rapid Exchange Technology™ clears smells from most standard-sized rooms (10' x 10' x 8') in under 30 minutes
- Great for bathroom, kitchen, mudroom, home gym and more







**EVOLUTION FEEDER 225**     

**WGI-WGIFD0040**      UPC: 616376001482

- 225 pound capacity / 1-4 available feed times / 30 feet radius
- 100% varmint proof so you can easily attract and pattern game
- Spinner plate recessed underneath heavy-duty mounting bracket doesn't let critters access feed
- Spring-loaded design automatically reseals to barrel after spinning
- New arm design uses centrifugal force to drop as feed is dispersed



**EVOLUTION FEEDER 270**     

**WGI-WGIFD0041**      UPC: 616376001499

- 270 pound capacity / 1-6 available feed times / 50 feet radius
- 100% varmint proof so you can easily attract and pattern game
- Spinner plate recessed underneath heavy-duty mounting bracket doesn't let critters access feed
- Spring-loaded design automatically reseals to barrel after spinning
- New arm design uses centrifugal force to drop as feed is dispersed



**QUICK-SET™ 270 PRO**     

**WGI-WGIFD0030**      UPC: 616376509056

- 270 pound capacity / 1-6 available feed times / 50 feet radius
- Rigid varmint guard protects unit and eliminates feed waste
- Box design with handle for easy filling and transport
- Durable powder-coated legs (12-piece kit)
- Galvanized steel spinner plate
- Built-in funnel for accurate feed dispersal



**QUICK-SET™ 270**    

**WGI-WGIFD0026**      UPC: 616376506109

- 270 pound capacity / 1-4 available feed times / 30 feet radius
- Easily attract and pattern game
- Durable poly barrel design
- Built-in funnel for accurate feed dispersal
- Heavy-duty coated legs (12-piece kit)
- Galvanized steel spinner plate



**QUICK-SET™ 225**    

**WGI-WGIFD0025**      UPC: 616376506093

- 225 pound capacity / 1-4 available feed times / 30 feet radius
- Easily attract and pattern game
- Durable poly barrel design
- Built-in funnel for accurate feed dispersal
- Heavy-duty coated legs (12-piece kit)
- Galvanized steel spinner plate



**QUICK-SET™ 50**  

**WGI-WGIPF0012**      UPC: 616376506086

- 50 pound capacity / 1-2 available feed times / 30 feet radius
- Hanging pail design
- Feed during peak activity at dawn or dusk
- Galvanized steel spinner plate
- Easily mobile so you can find the right spot
- Realtree Xtra® camo pail



**TREEHUGGER™**  

**WGI-WGIFD0032**      UPC: 616376510434

- Up to 100 pound capacity / Trubark HD™ camo
- Gravity bag feeder naturally replenishes feed as it's consumed
- Fill with corn, attractant or minerals
- Durable weatherproof material
- Roll-top sealed closure
- Great for hard-to-reach areas like backwoods or swamps







**EVOLUTION FEEDER 6V DIGITAL PCU**

WGI-WGIPU0030

UPC: 616376001512

- 100% varmint proof so you can easily attract and pattern game
- Spinner plate recessed underneath heavy-duty mounting bracket doesn't let critters access feed
- Spring-loaded design automatically reseals to barrel after spinning
- Up to 24 daily feed times
- 360-degree / 30-foot feed range



**EVOLUTION FEEDER 6V ANALOG PCU**

WGI-WGIPU0031

UPC: 616376001475

- 100% varmint proof so you can easily attract and pattern game
- Spinner plate recessed underneath heavy-duty mounting bracket doesn't let critters access feed
- Spring-loaded design automatically reseals to barrel after spinning
- 4 available feed times
- 360-degree / 30-foot feed range



**EVOLUTION FEEDER 12V DIGITAL PCU**

WGI-WGIPU0032

UPC: 616376001505

- 100% varmint proof so you can easily attract and pattern game
- Spinner plate recessed underneath heavy-duty mounting bracket doesn't let critters access feed
- Spring-loaded design automatically reseals to barrel after spinning
- 6 available feed times
- 360-degree / 30-foot feed range



**6V ANALOG FEEDER KIT**

WGI-WGIPU0022

UPC: 616376501494

- Easy plug-and-play operation
- Up to 24 daily feed times
- 360-degree / 30-foot feed range
- Powder-coated, galvanized steel construction
- 2" drop funnel



**6V DIGITAL FEEDER KIT**

WGI-WGIPU0017

UPC: 616376900006

- Digital electronics
- 4 available feed times
- 360-degree / 30-foot feed range
- Powder-coated, galvanized steel construction
- 2" drop funnel



**6V DAWN/DUSK FEEDER KIT**

WGI-WGIPU0019

UPC: 616376900013

- Photocell electronics
- 360-degree / 30-foot feed range
- Dawn and dusk feed times
- Powder-coated, galvanized steel construction
- 2" drop funnel



**12V DIGITAL FEEDER KIT**

WGI-WGIPU0020

UPC: 616376900266

- Digital electronics
- 6 available feed times
- Feed time durations from 1 to 30 seconds
- Powder-coated, galvanized steel construction
- 2" drop funnel



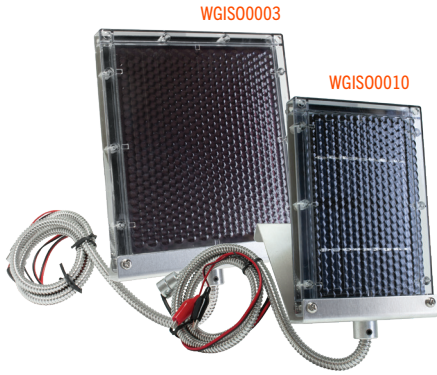
**DIGITAL TIMER**

WGI-WGITM0003

UPC: 616376900273

- Digital electronics
- 1-6 available feed times
- Battery-type indicator
- Large, easy-to-view LCD
- Adjustable (low, med, hi) motor speed





**EDRENALINE™ SOLAR PANELS**

- |                      |                   |
|----------------------|-------------------|
| <b>WGI-WGIS00010</b> | UPC: 616376900228 |
| • 6V Solar Panel     |                   |
| <b>WGI-WGIS00003</b> | UPC: 616376900235 |
| • 12V Solar Panel    |                   |
- High efficiency
  - Aluminum mounting bracket and hardware
  - Polycarbonate front cover for years of trouble-free service
  - Thin film design
  - Protective steel flex-conduit and piggy back battery connectors



**MOONSHINE™ 2**

- |                      |                   |
|----------------------|-------------------|
| <b>WGI-WGILT0003</b> | UPC: 616376507137 |
|----------------------|-------------------|
- For hog and predator hunting
  - Easy installation for any feeder (Setup hardware included)
  - PIR activated and built-in solar panel
  - 16 green LED light system
  - Weather resistant design



**REPLACEMENT MOTORS**

- |                         |                   |
|-------------------------|-------------------|
| <b>WGI-WGIMT0011</b>    | UPC: 616376100758 |
| • 6V Replacement Motor  |                   |
| <b>WGI-WGIMT0003</b>    | UPC: 616376100772 |
| • 12V Replacement Motor |                   |



**6V/12V BATTERY CHARGER**

- |                      |                   |
|----------------------|-------------------|
| <b>WGI-WGIBC0005</b> | UPC: 616376100703 |
|----------------------|-------------------|



**6V SPRING TOP BATTERY**

- |                      |                   |
|----------------------|-------------------|
| <b>WGI-WGIBT0014</b> | UPC: 616376500084 |
|----------------------|-------------------|



**TAB-STYLE BATTERIES**

- |                           |                   |
|---------------------------|-------------------|
| <b>WGI-WGIBT0013</b>      | UPC: 616376100666 |
| • 6V Replacement Battery  |                   |
| <b>WGI-WGIBT0011</b>      | UPC: 616376100673 |
| • 12V Replacement Battery |                   |



**VARMINT CAGE**

- |                      |                   |
|----------------------|-------------------|
| <b>WGI-WGILT0002</b> | UPC: 616376506635 |
|----------------------|-------------------|



**SPINNER PLATES**

- |                      |                   |
|----------------------|-------------------|
| <b>WGI-WGIMT0002</b> | UPC: 616376100765 |
| • 6V Spinner Plates  |                   |
| <b>WGI-WGIMT0004</b> | UPC: 616376100789 |
| • 12V Spinner Plates |                   |



**FUNNELS | 55 GAL. DRUM POLY LID**

- |                                |                   |
|--------------------------------|-------------------|
| <b>WGI-WGIMT0008</b>           | UPC: 616376500794 |
| • 2" Drop Funnel               |                   |
| <b>WGI-WGIFA0008</b>           | UPC: 616376900068 |
| • Poly Funnel for 55 Gal. Drum |                   |
| <b>WGI-WGIFA0009</b>           | UPC: 616376900051 |
| • Poly Lid for 55 Gal. Drum    |                   |



ACORN RAGE™



WGI-WLD452	UPC: 850695004520
• 15 Lb. Bag	
WGI-WLD381	UPC: 850695003813
• 5 Lb. Bag	
WGI-WLD031	UPC: 855018000319
• 4 Lb. Brick	
WGI-WLD006	UPC: 855018000067
• 1 Gallon Jug	

- Real acorns crushed and blended with roasted soybean meal
- Pure acorn scent and flavor packed with rack-building nutrients
- Airborne Technology™ creates long-range scent vapor trail



SUGAR BEET CRUSHED™



WGI-WLD340	UPC: 850695003400
• 15 Lb. Bag	
WGI-WLD076	UPC: 855018000760
• 5 Lb. Bag	
WGI-WLD015	UPC: 855018000159
• 4 Lb. Brick	
WGI-WLD052	UPC: 855018000524
• 1 Gallon Jug	

- Real sugar beets crushed and blended into an ultra-concentrated attractant
- Captures one of deer's favorite treats that can be difficult to find
- Airborne Technology™ creates long-range scent vapor trail



APPLE CRUSHED™



WGI-WLD462	UPC: 850695004629
• 15 Lb. Bag	
WGI-WLD323	UPC: 850695003233
• 5 Lb. Bag	
WGI-WLD329	UPC: 850695003295
• 4 Lb. Brick	
WGI-WLD328	UPC: 850695003288
• 1 Gallon Jug	

- Fresh, all-natural apples are sliced, dried and crushed with an irresistible sweet mix of proteins and fats
- Tasty, nutritious treat brings out even the most cautious bucks
- Real apple power will help you crush that trophy buck you've been waiting for



ACORN RAGE FEEDER FAT™ 5 LB. BAG



WGI-WLD086	UPC: 855018000869
------------	-------------------

- Concentrated pellet made with real acorns
- 4x more fat than corn
- Treats up to 80 pounds of corn



PERSIMMON CRUSHED™ 5 LB. BAG



WGI-WLD422	UPC: 850695004223
------------	-------------------

- Proprietary double-screening process creates fine powder that absorbs and releases more potent scent
- Airborne Technology™ creates long-range scent vapor trail
- Ultra-high fat content and carbohydrate blend



PILE DRIV'R™



WGI-WLD501	UPC: 616376001178
------------	-------------------

WGI-WLD500	UPC: 616376001185
------------	-------------------

- 20 Lb. Bag
- Sweet and savory aroma attracts big bucks from long distances
- Highly palatable blend for ease of consumption
- Easy additional food source for late season



HOG HEAVEN™ 5 LB. BAG



WGI-WLD059	UPC: 855018000593
------------	-------------------

- Sweet and savory aroma attracts big bucks from long distances
- Highly palatable blend for ease of consumption
- Easy additional food source for late season



BUCK SNORT™ APPLE 40 OZ. BOTTLE



WGI-WLD460	UPC: 850695004605
------------	-------------------

- Irresistible apple aroma and incredibly long lasting
- Flip top cap for easy, mess-free application
- Super dense mineral concentration